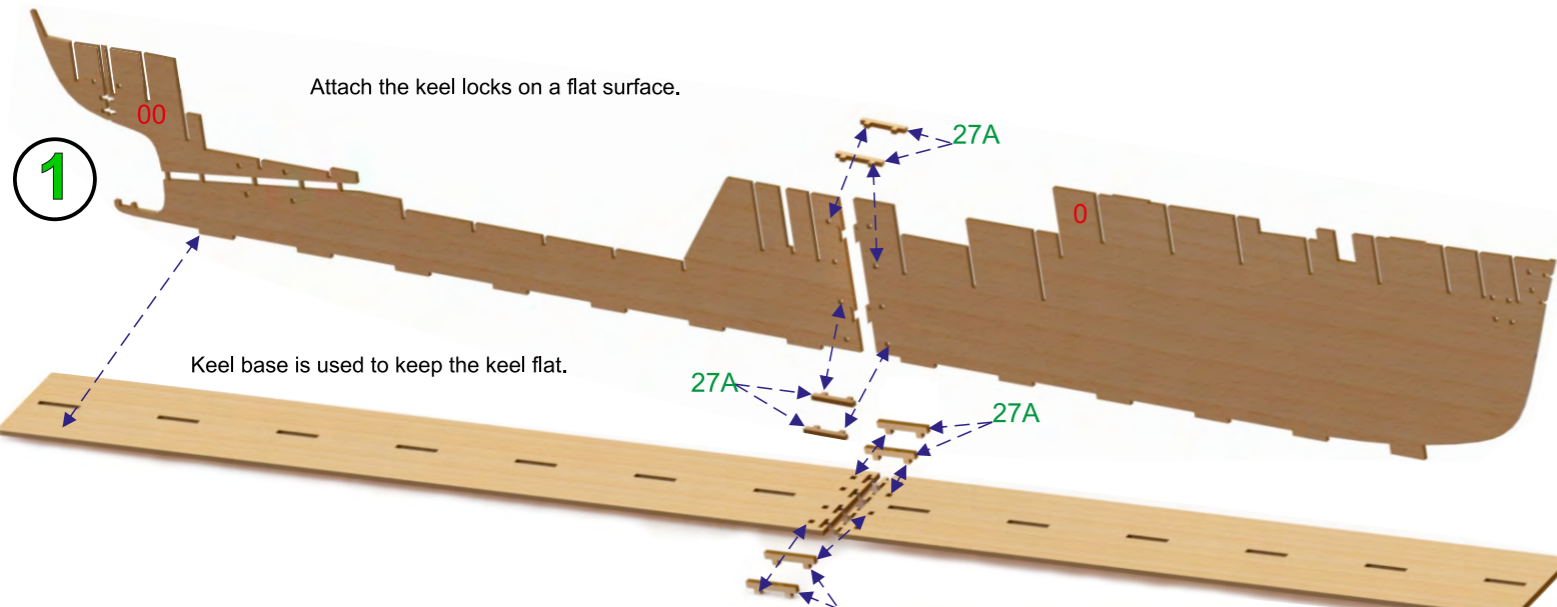


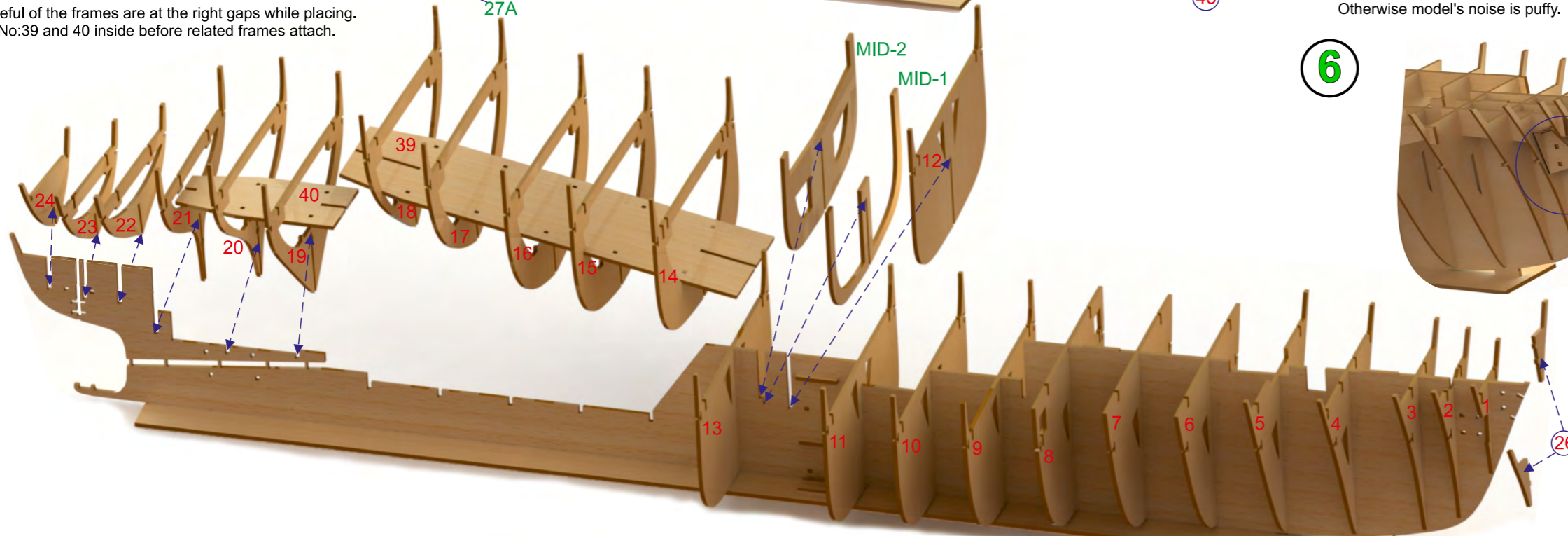
**1**



Attach the keel locks on a flat surface.

Keel base is used to keep the keel flat.

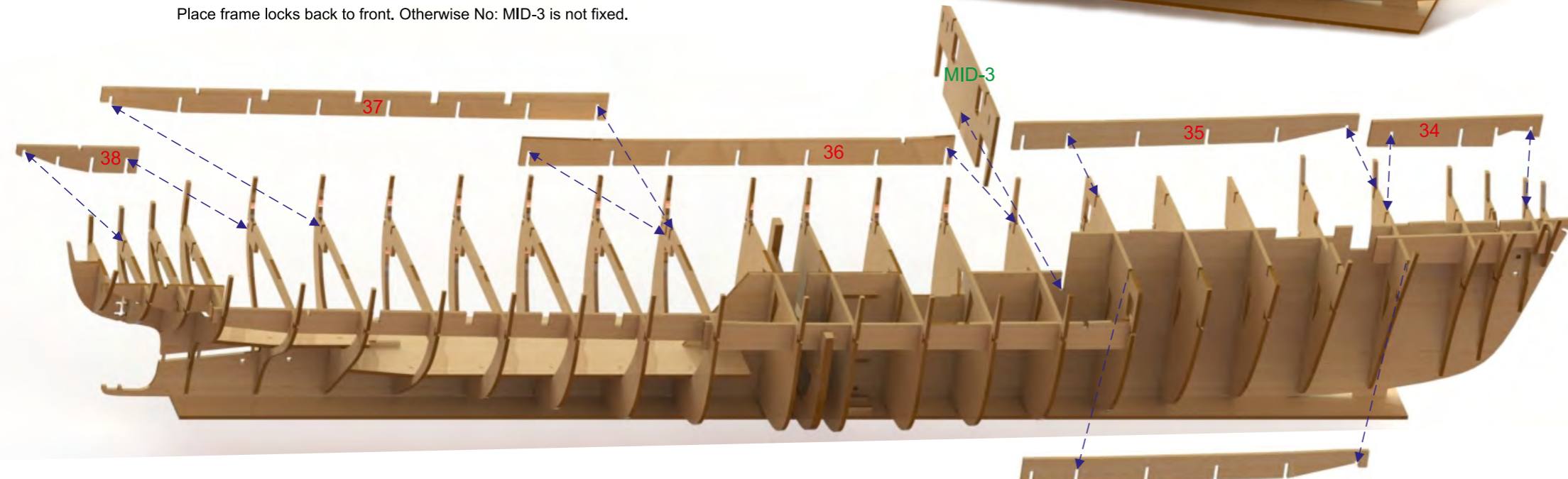
**2**



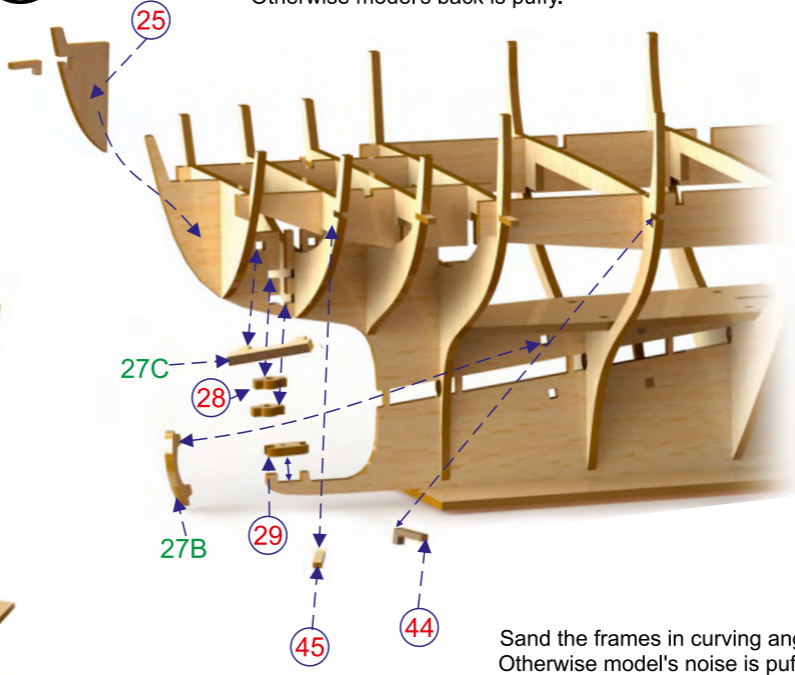
Be careful of the frames are at the right gaps while placing. Place No:39 and 40 inside before related frames attach.

Place frame locks back to front. Otherwise No: MID-3 is not fixed.

**3**

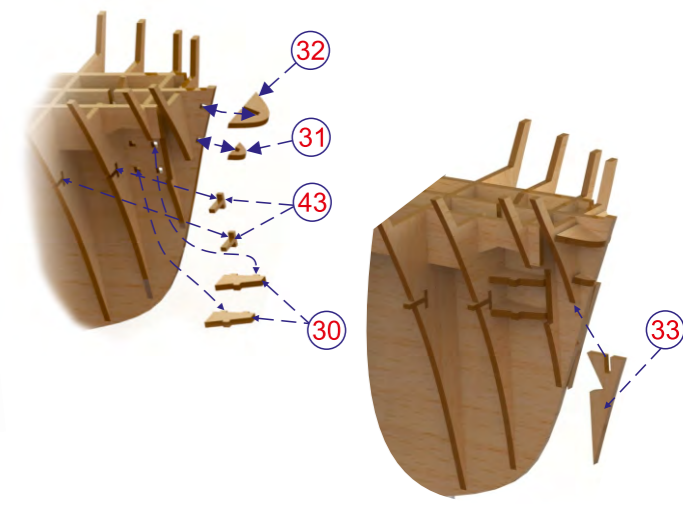


**4**



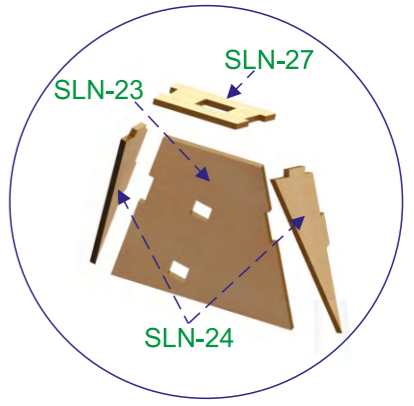
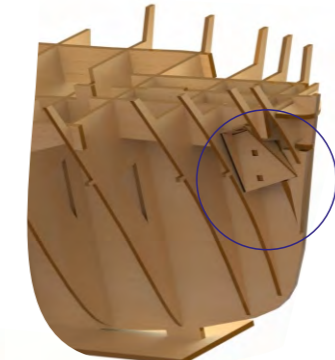
Sand the frames in curving angle at the back. Otherwise model's back is puffy.

**5**

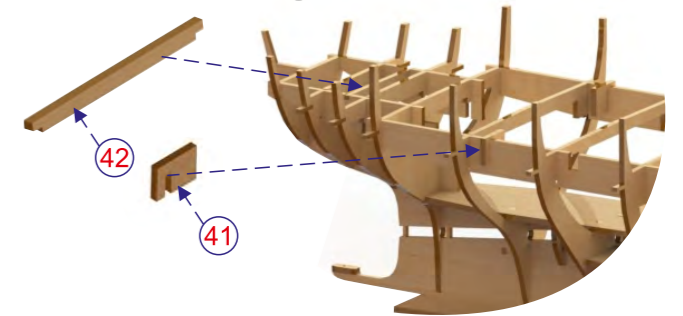


Sand the frames in curving angle at the front. Otherwise model's nose is puffy.

**6**



**7**





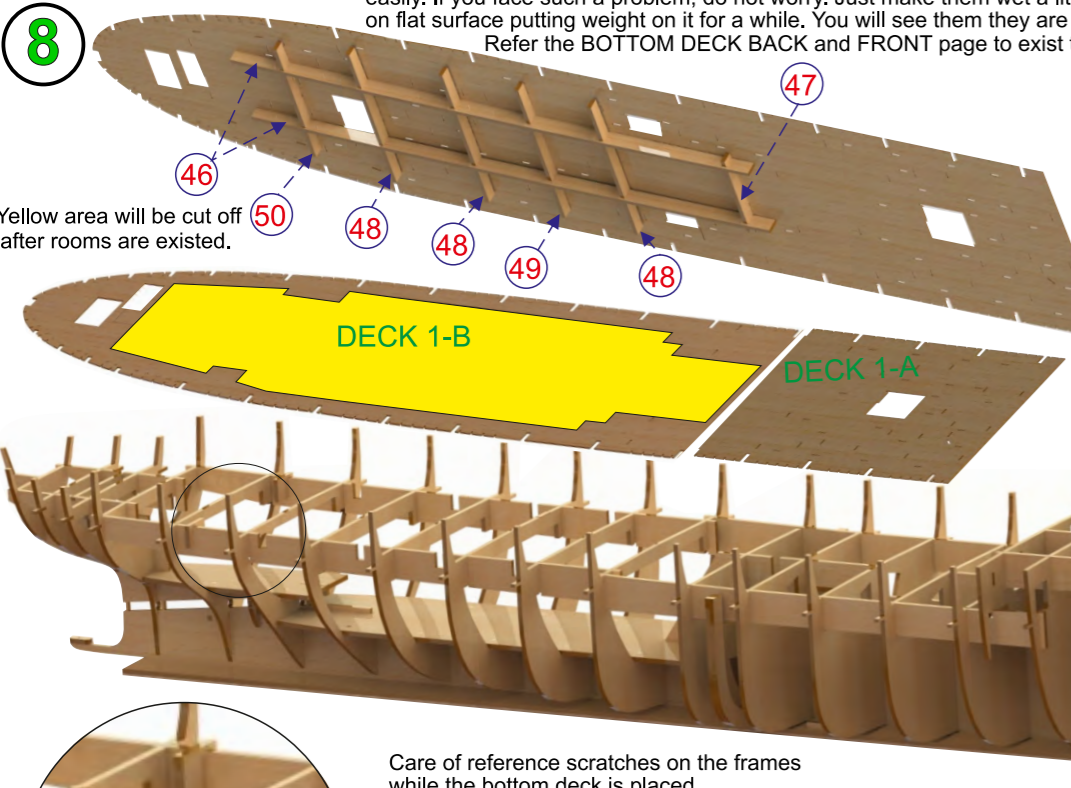
# modell-tec

## M/S FINNMARKEN 1/60

# Tegning-2

8

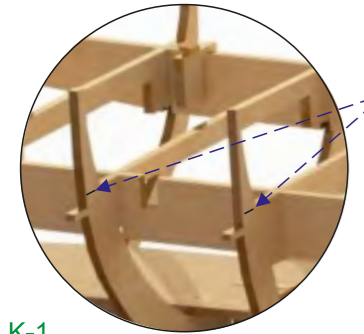
Yellow area will be cut off after rooms are existed.



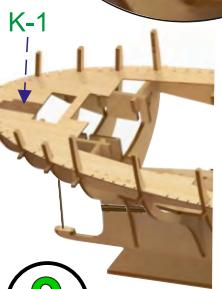
Tiny plywoods are so sensible to weather and stock conditions. They can be bent easily. If you face such a problem, do not worry. Just make them wet a little and lay on flat surface putting weight on it for a while. You will see them they are flat later. Refer the BOTTOM DECK BACK and FRONT page to exist the rooms.

Keep the parts in the water to flex easily. Do not try to bend straightly.

Refer the FRONT DECK page to exist the rooms.

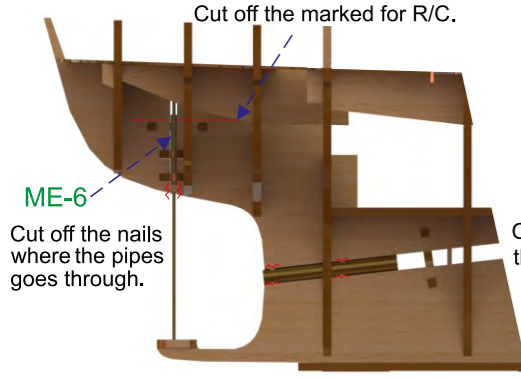


Care of reference scratches on the frames while the bottom deck is placed.



9

Refer the BOTTOM DECK BACK and FRONT page to exist the rooms.

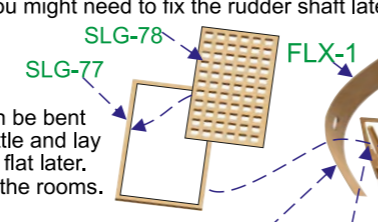


Cut off the nails where the pipes goes through.

Cut off the nails where the pipes goes through.

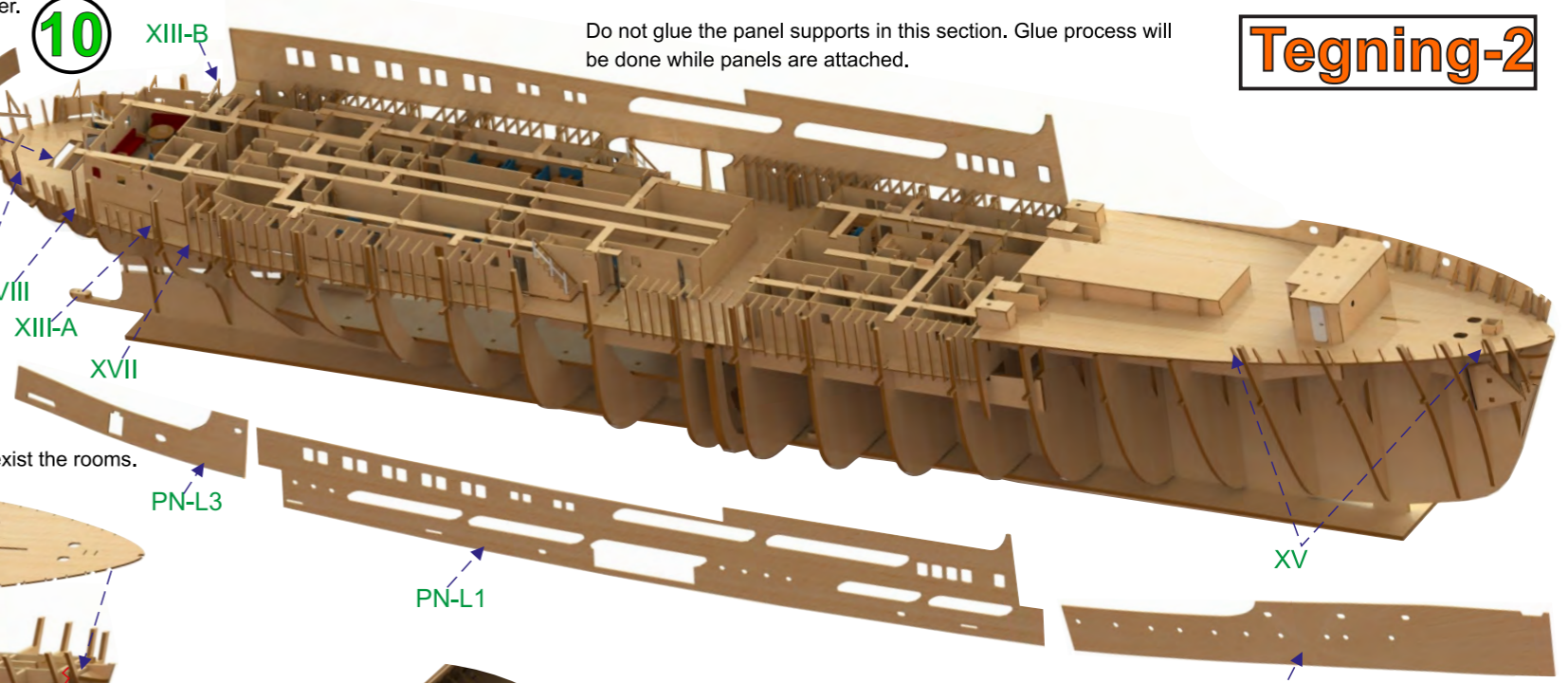
Do not glue the grill. You might need to fix the rudder shaft later.

10

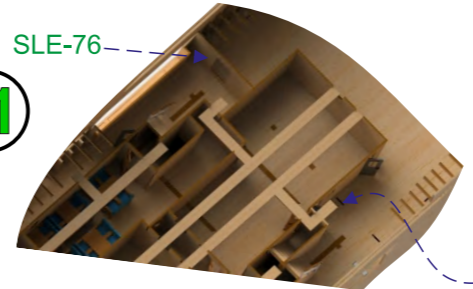


Refer the FRONT DECK page to exist the rooms.

Do not glue the panel supports in this section. Glue process will be done while panels are attached.



11

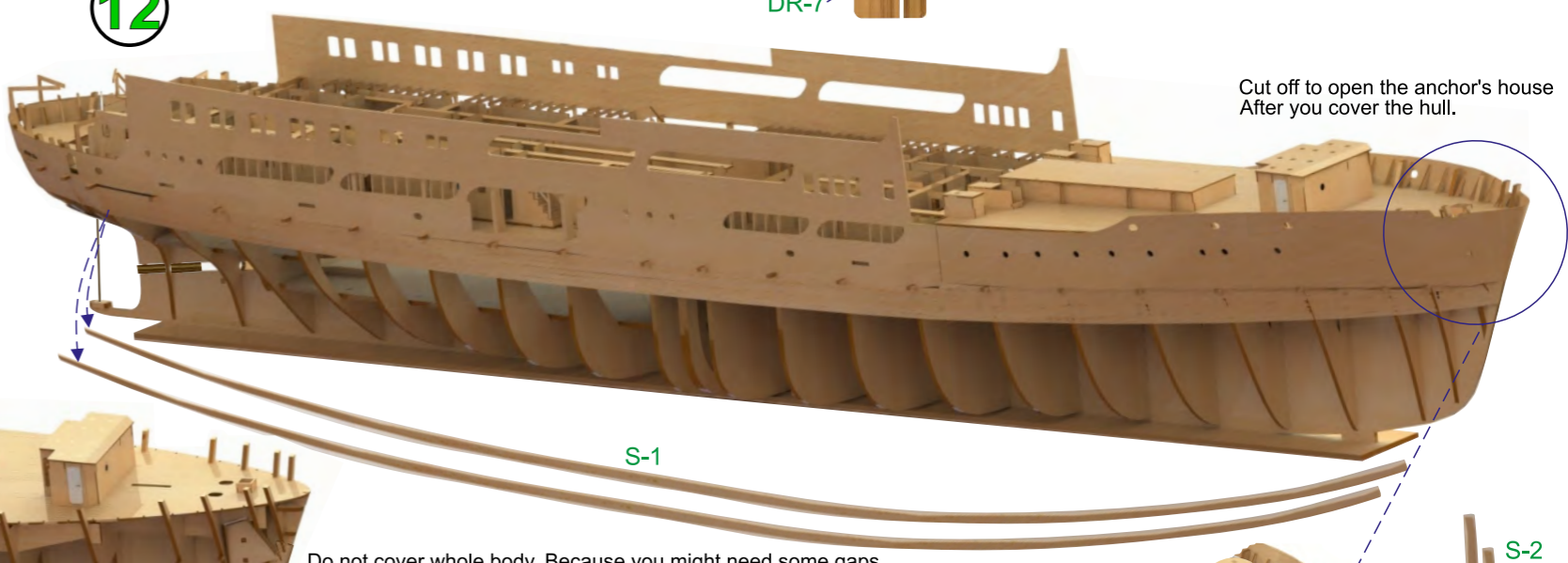


Glue the panels to the tip of the frames. In this process, panel supports still are free. After the panels are glued to the frames, then panel supports may be glued. Finally cut off the frame tips carefully.

Glue the SLC-75 AND 76 only deck, not to the wall.

12

Break off the tips of the frame locks.

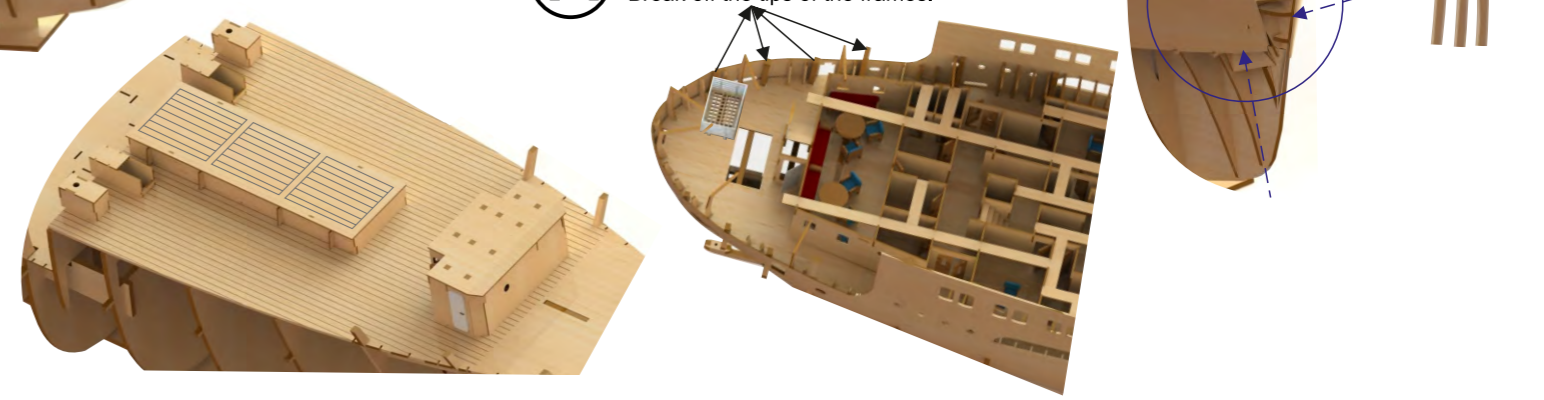


Cut off to open the anchor's house After you cover the hull.

14

Break off the tips of the frames.

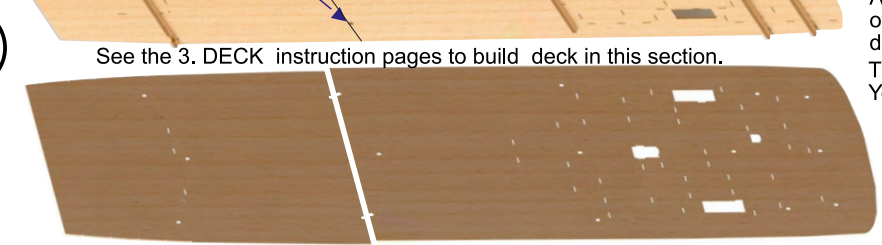
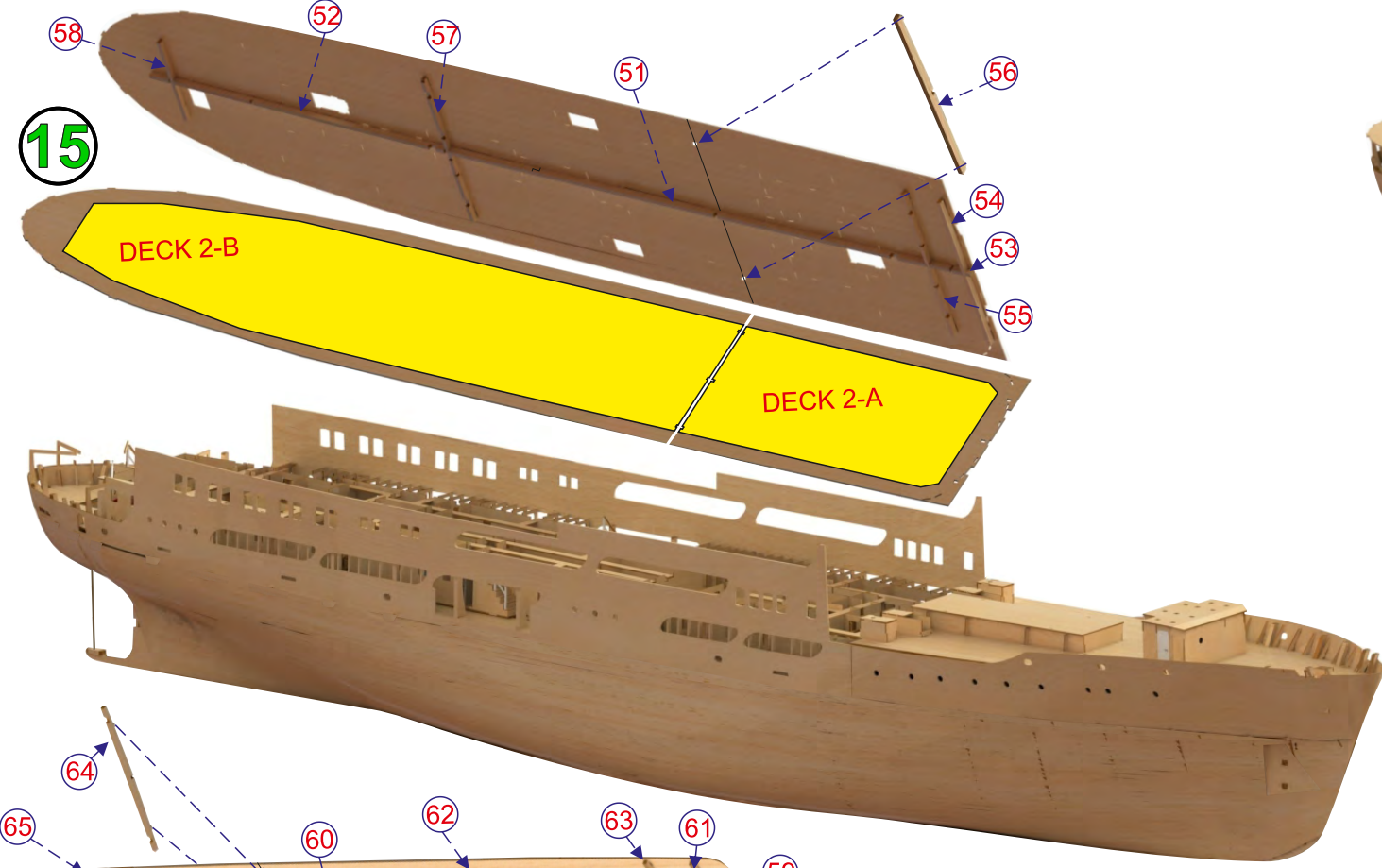
Do not cover whole body. Because you might need some gaps at the hull to set some electric set-up. You are advised to finish covering after all deck are built.



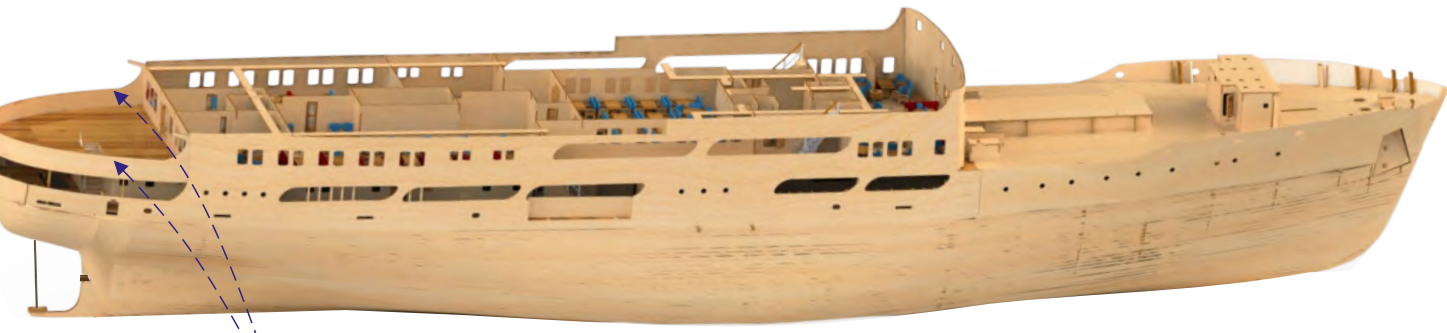


modell-tec  
M/S FINNMARKEN 1/60

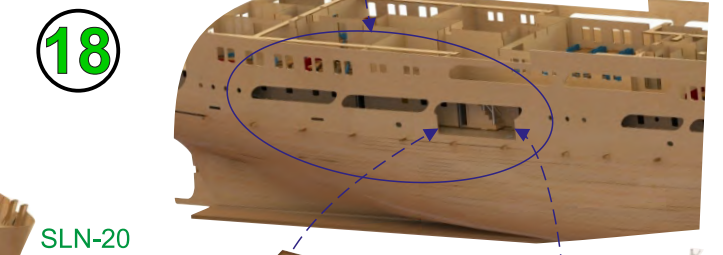
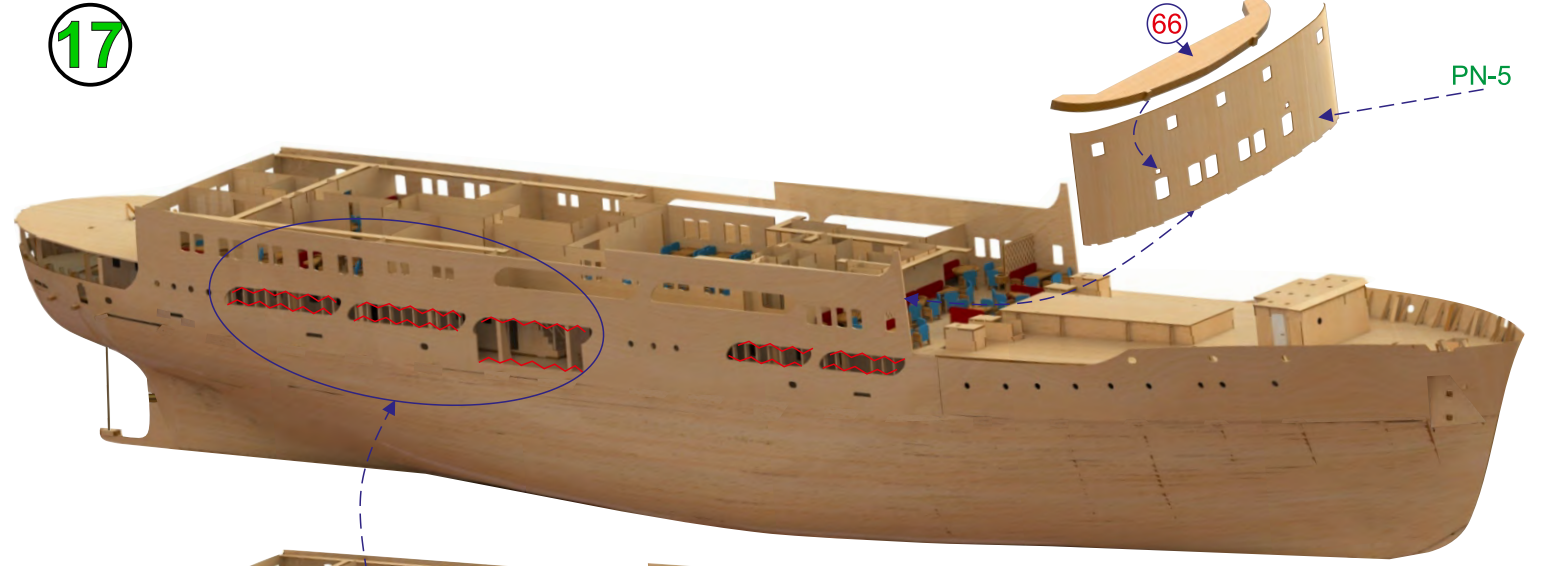
See the UPPER DECK instruction pages to build deck in this section.  
Attach the deck supporters and deck on its place. Build the rooms after attach the deck.  
Be sure the deck fits underneath.



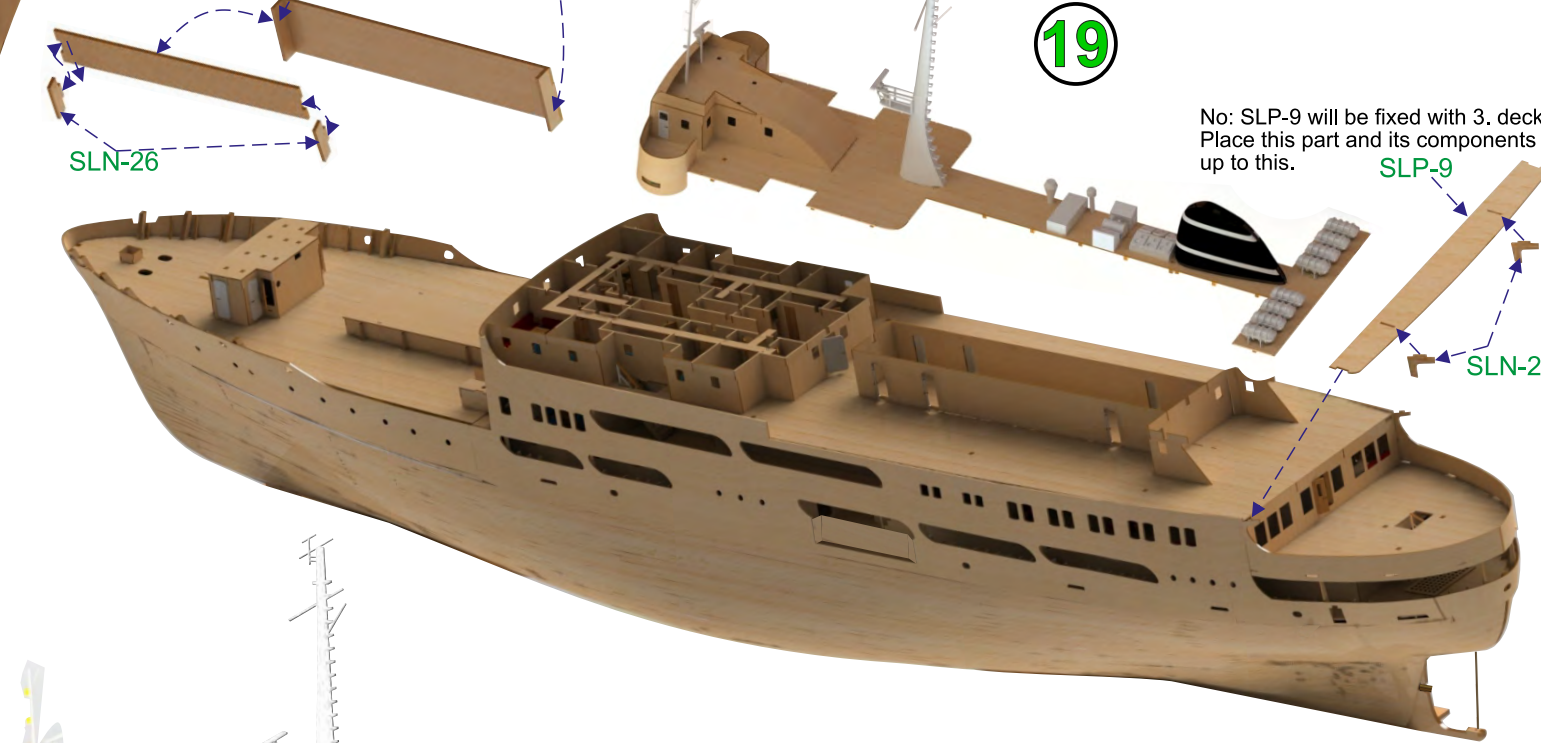
Attach the deck supports while two parts of deck are attached. Build the rooms after deck is attached on its place.  
This deck will be moveable, so do not cement.  
You might need to fix it by magnet.



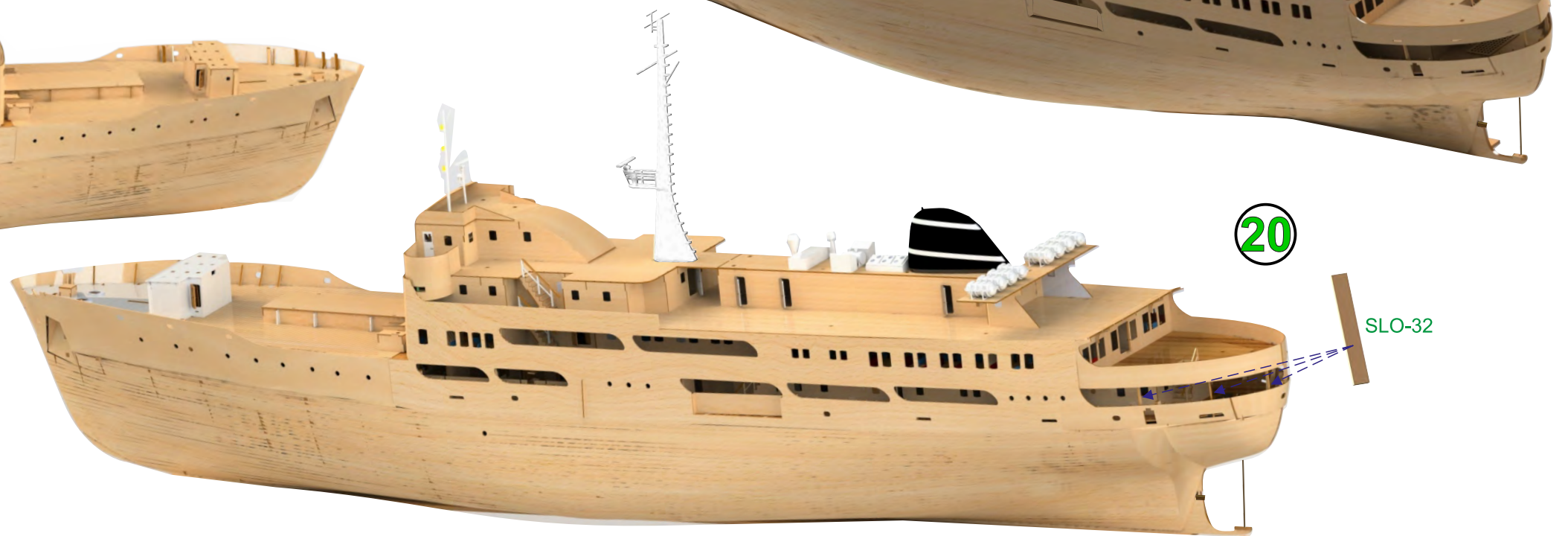
Keep the parts in the water to make them flexible.  
So that it might not be broken easily.



See the 4. DECK instruction pages to build deck in this section.

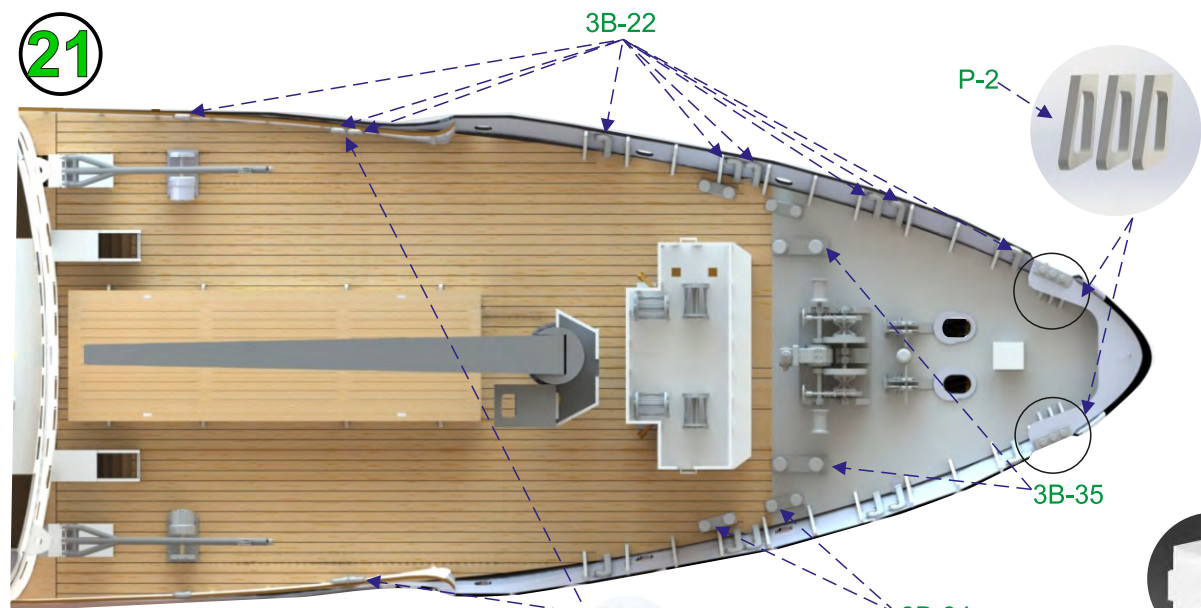


No: SLP-9 will be fixed with 3. deck.  
Place this part and its components up to this.



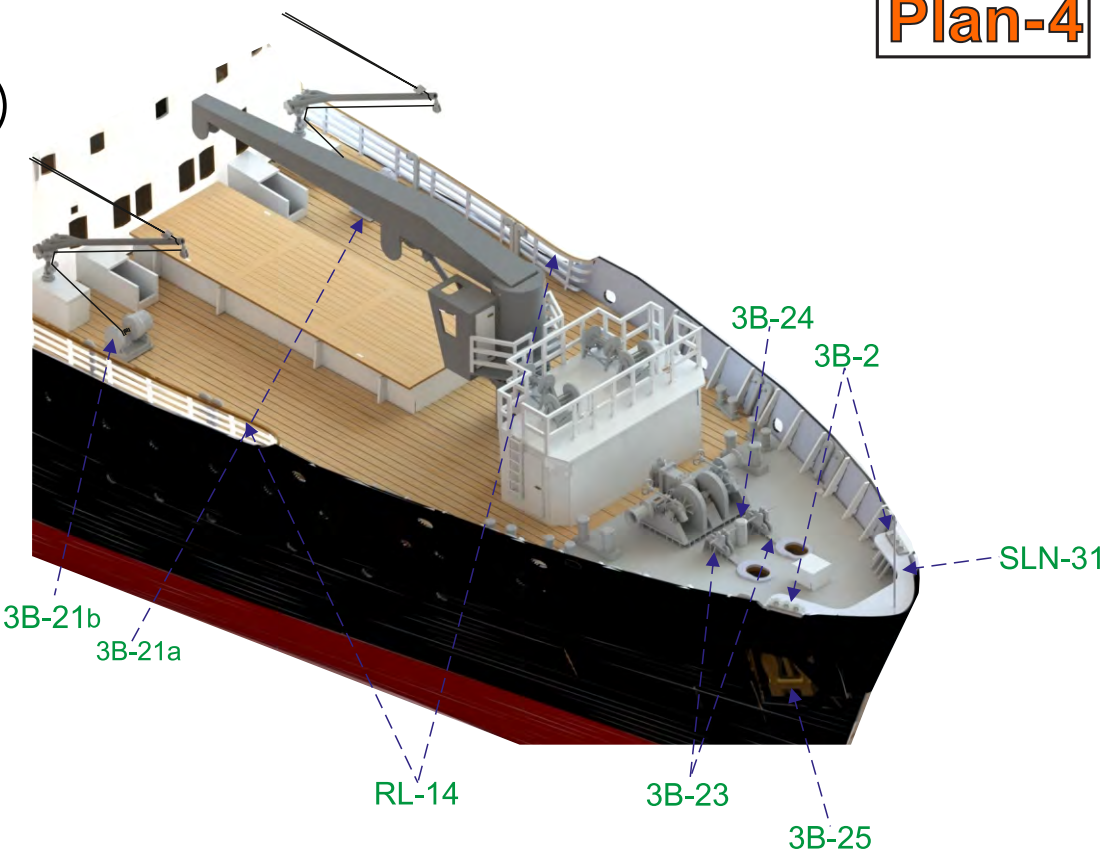


**21**

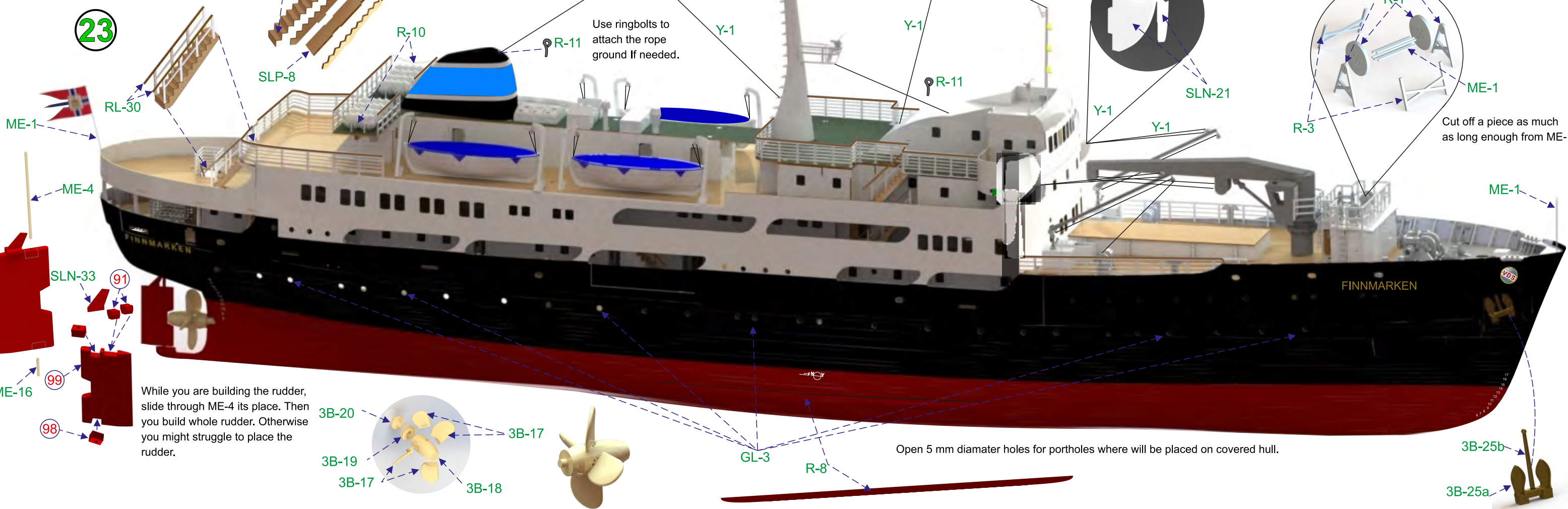


Be gentle with 3D print-out parts. They are sensible. See their shapes on the figures to break off their support legs and sand if needed. Use a suitable tool to break off remained support legs, do not break off by hand.

**22**



**23**



Use ringbolts to attach the rope ground if needed.

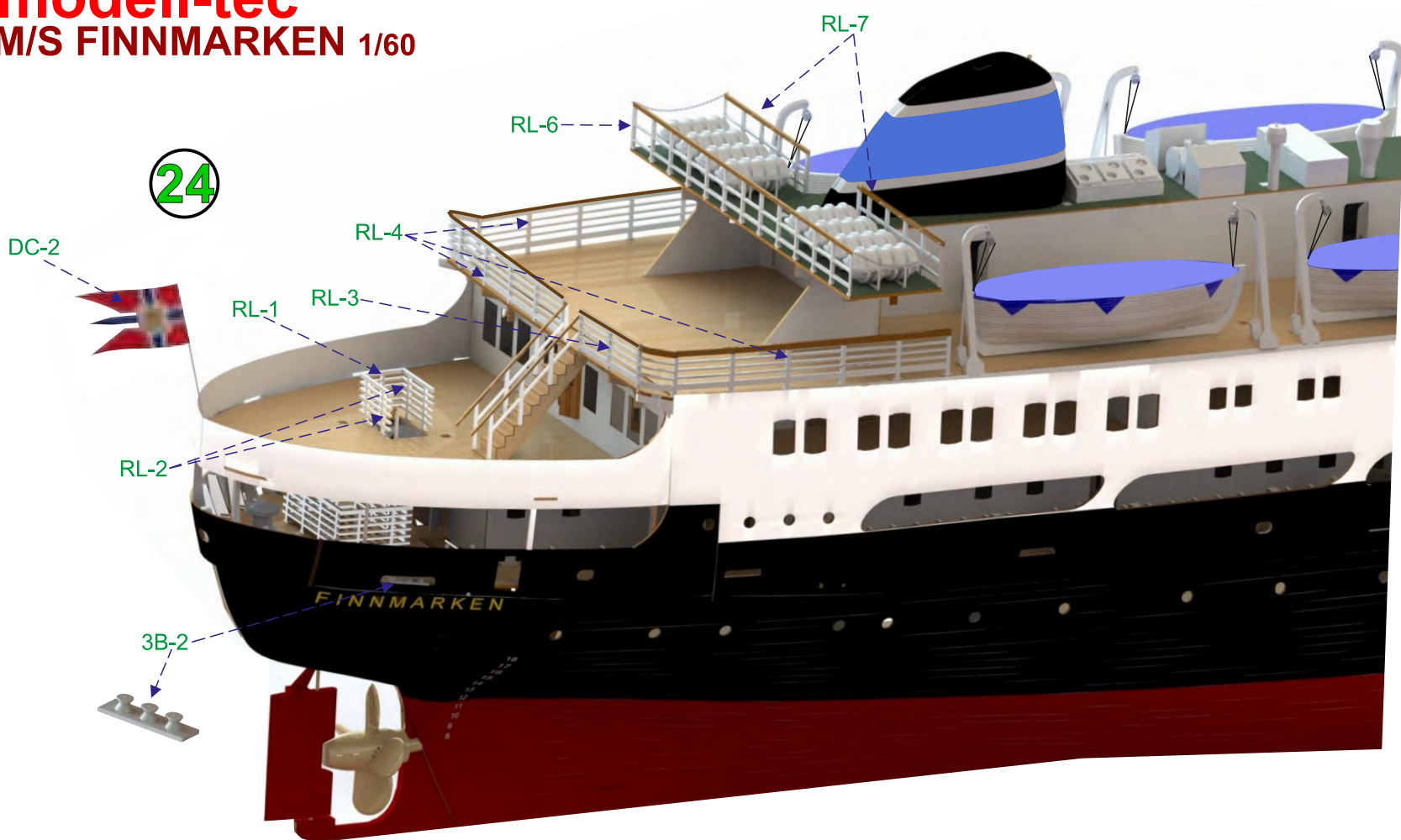
Cut off a piece as much as long enough from ME-1.

While you are building the rudder, slide through ME-4 its place. Then you build whole rudder. Otherwise you might struggle to place the rudder.

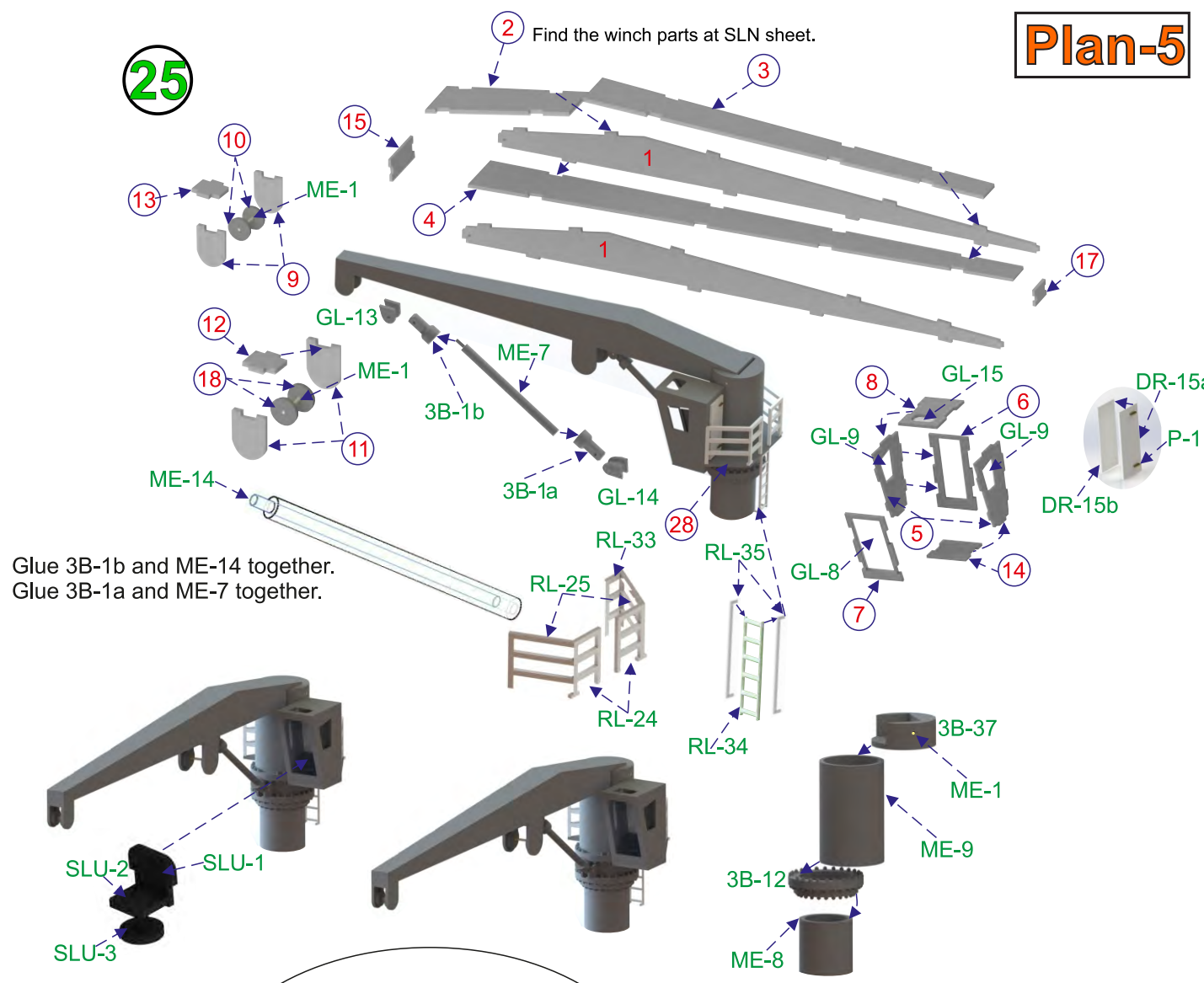
Open 5 mm diameter holes for portholes where will be placed on covered hull.



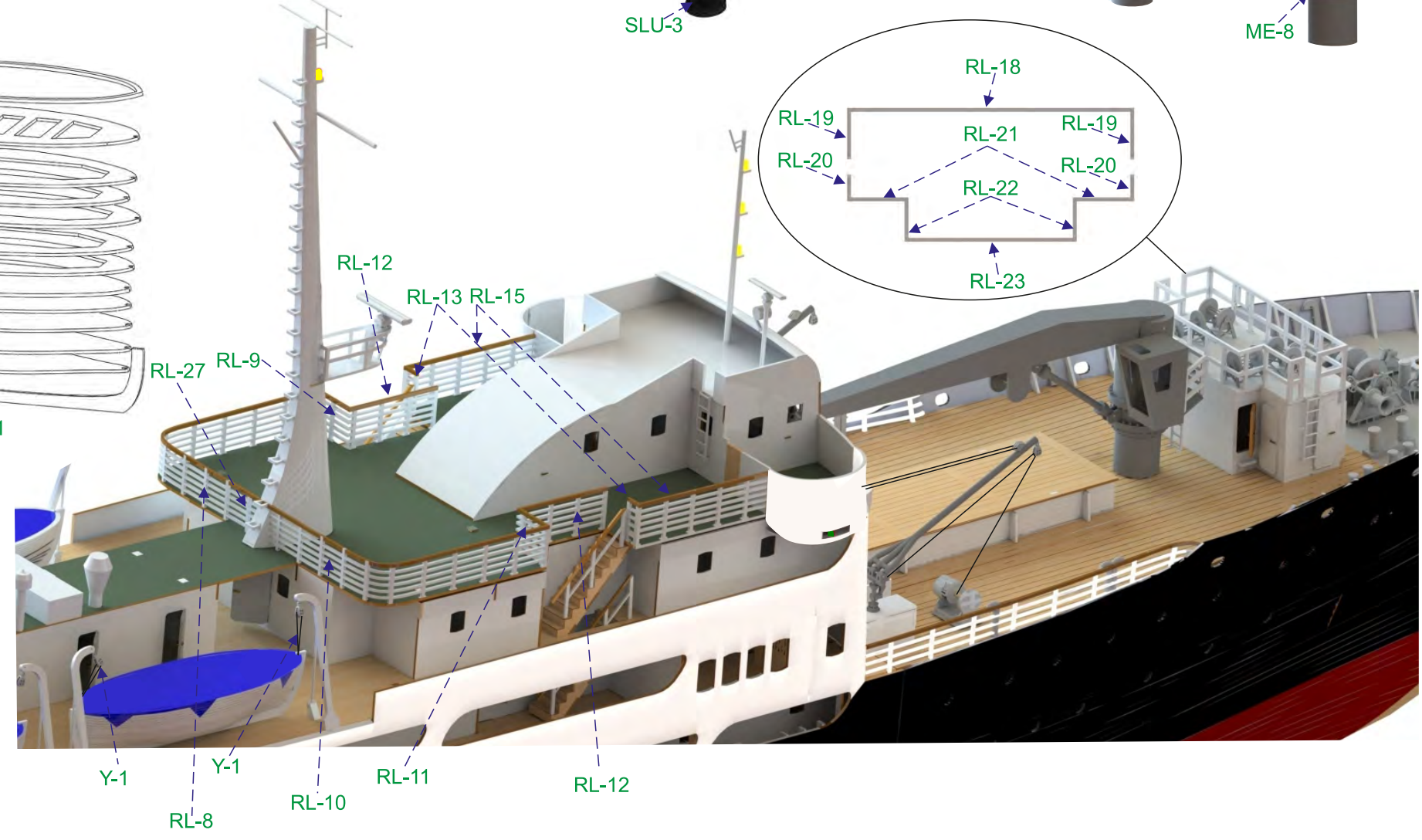
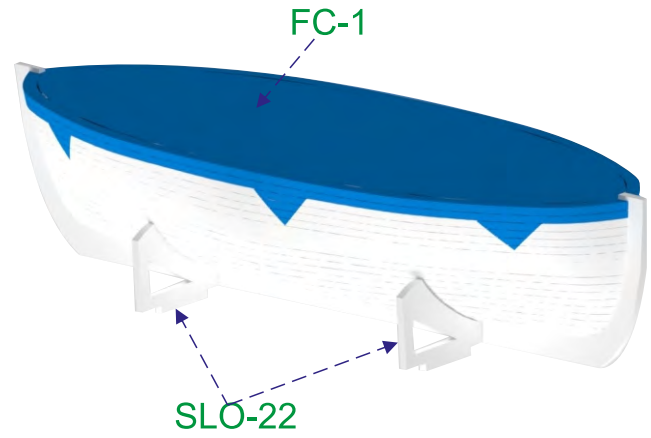
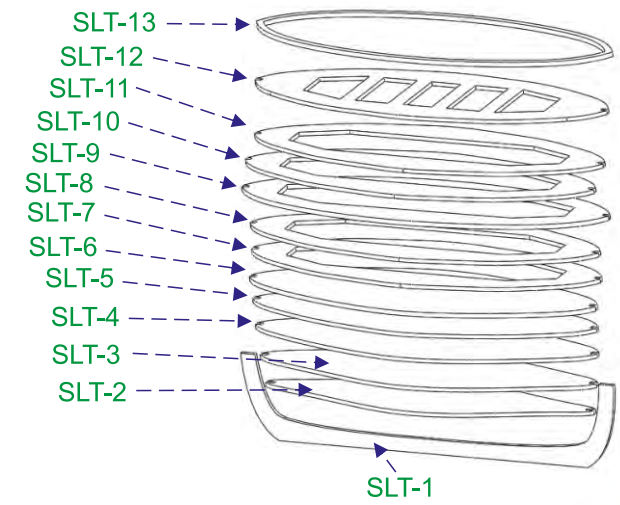
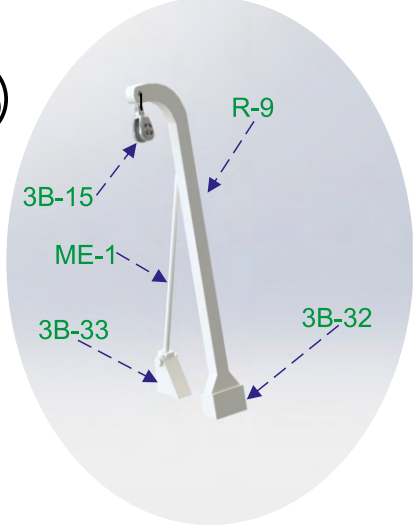
**24**



**25**



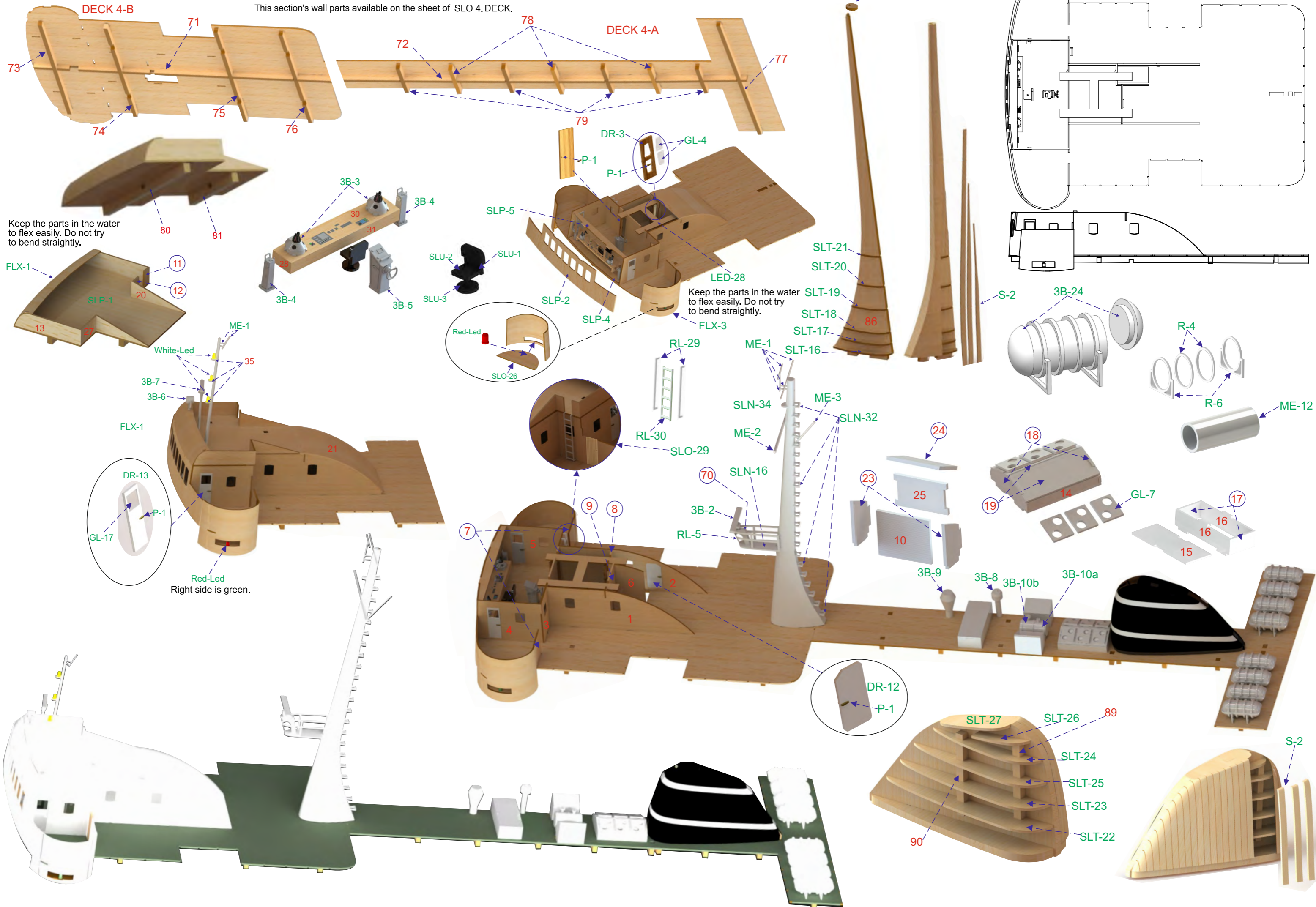
**26**





# 4.DECK

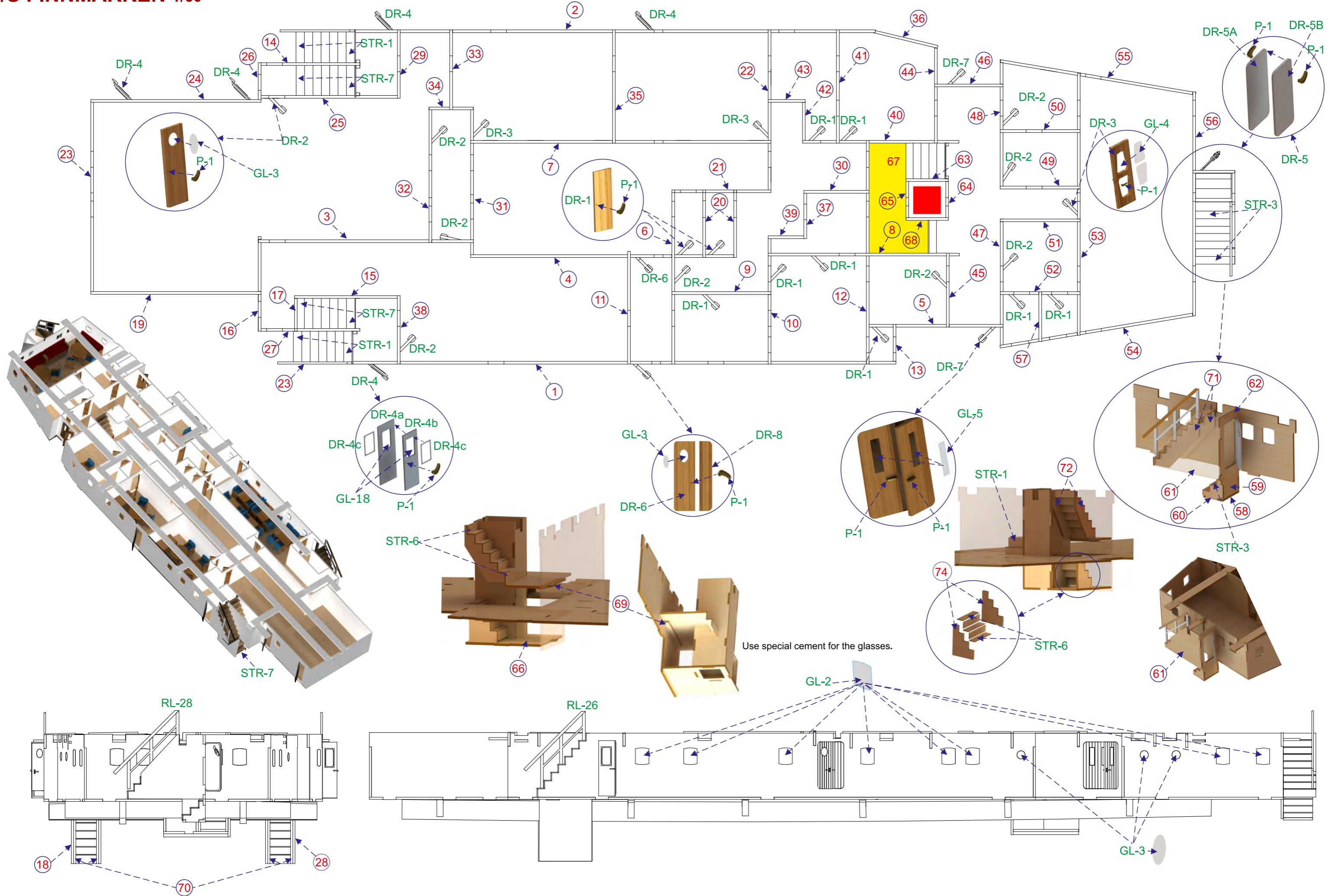
This section's wall parts available on the sheet of SLO 4.DECK.





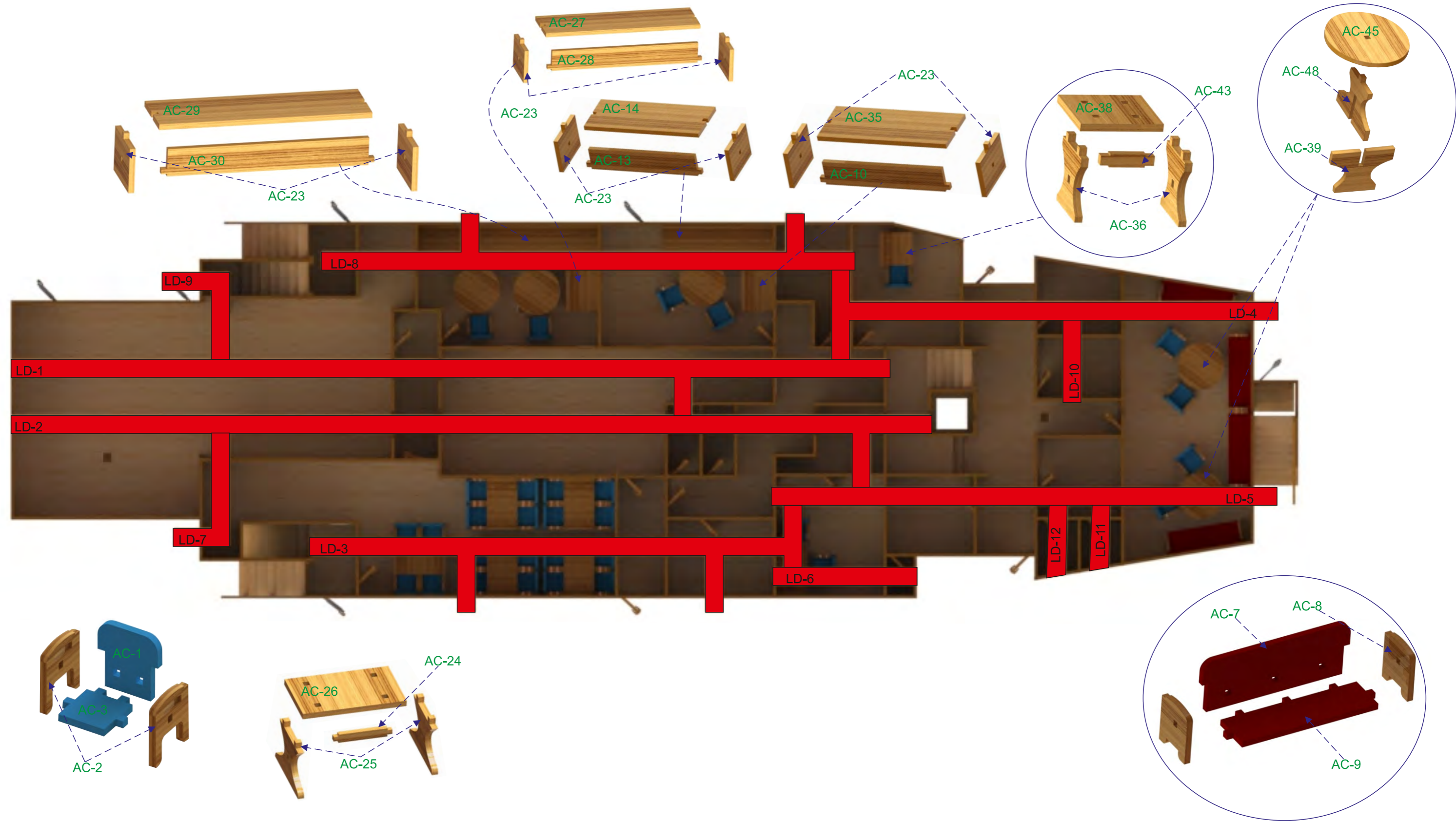
# BOTTOM DECK BACK-1

This section's wall parts available on the sheet of BOTTOM DECK BACK.



# BOTTOM DECK BACK-2

This section's wall parts available on the sheet of bottom deck back.

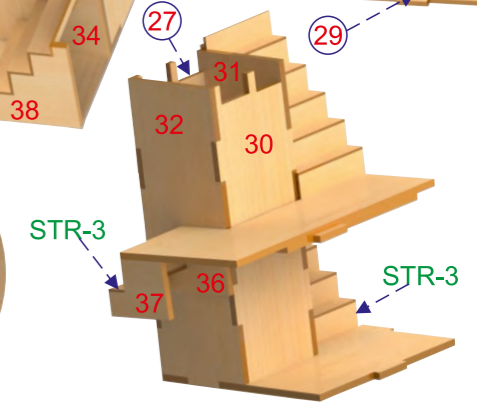
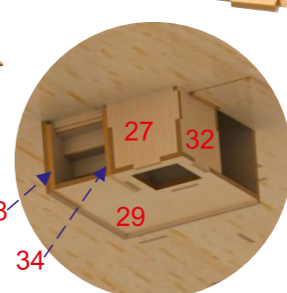
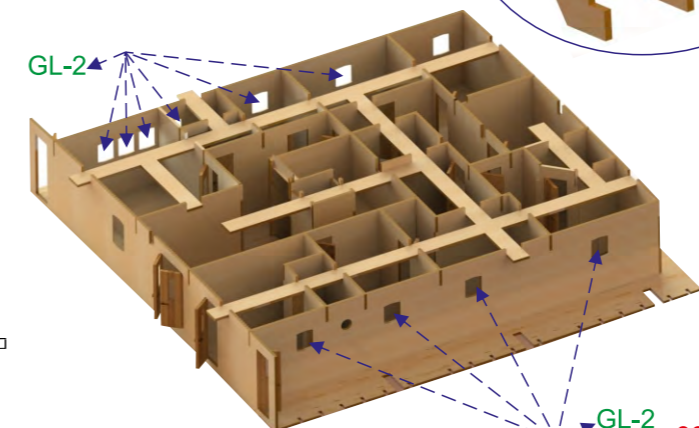
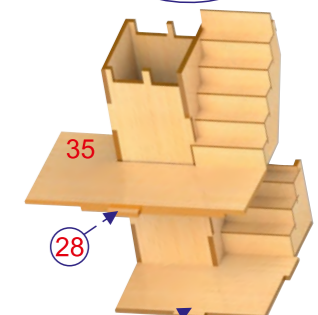
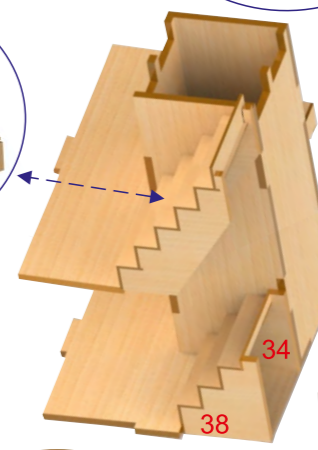
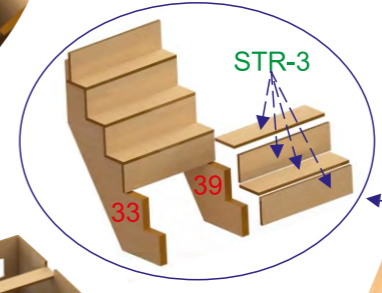
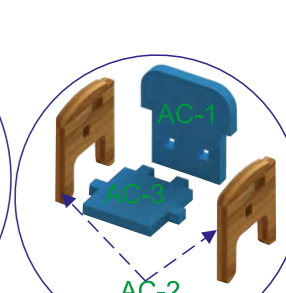
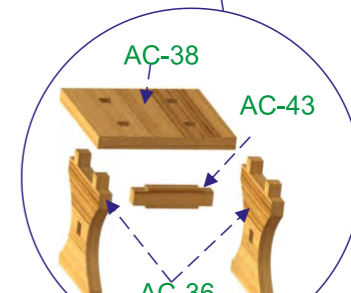
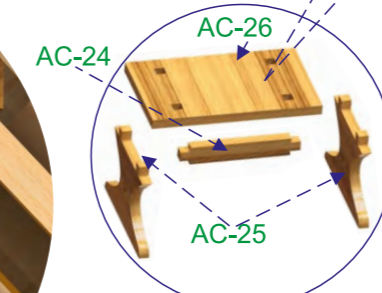
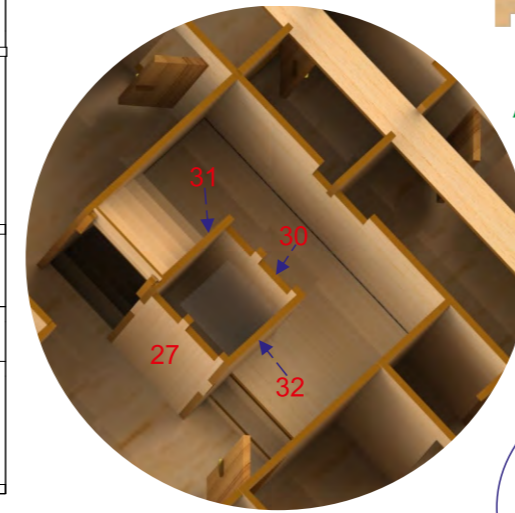
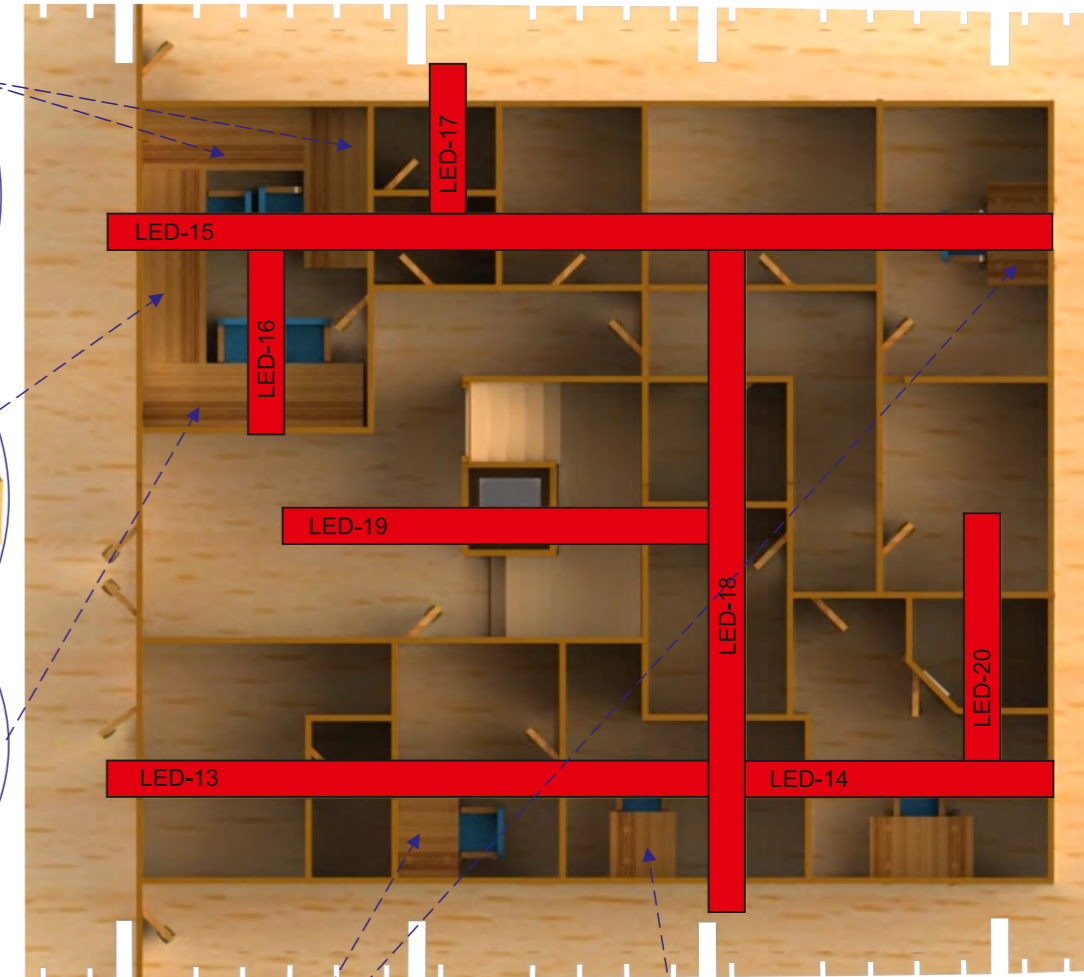
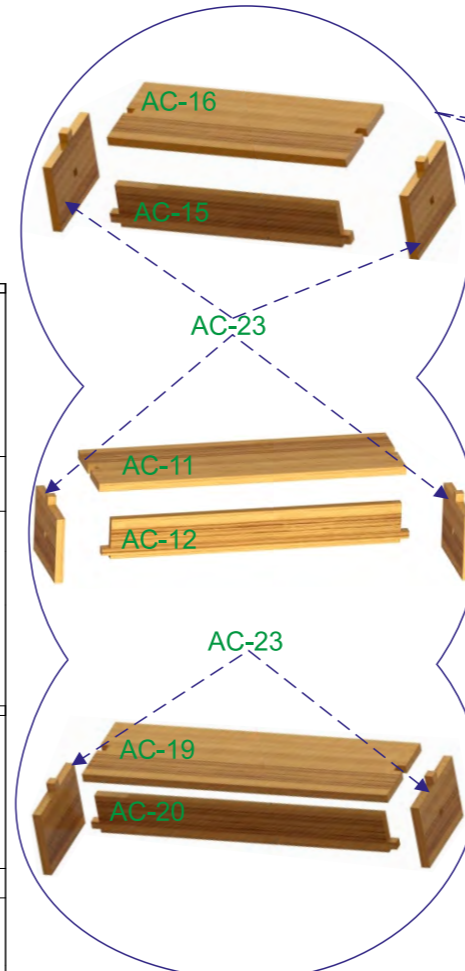
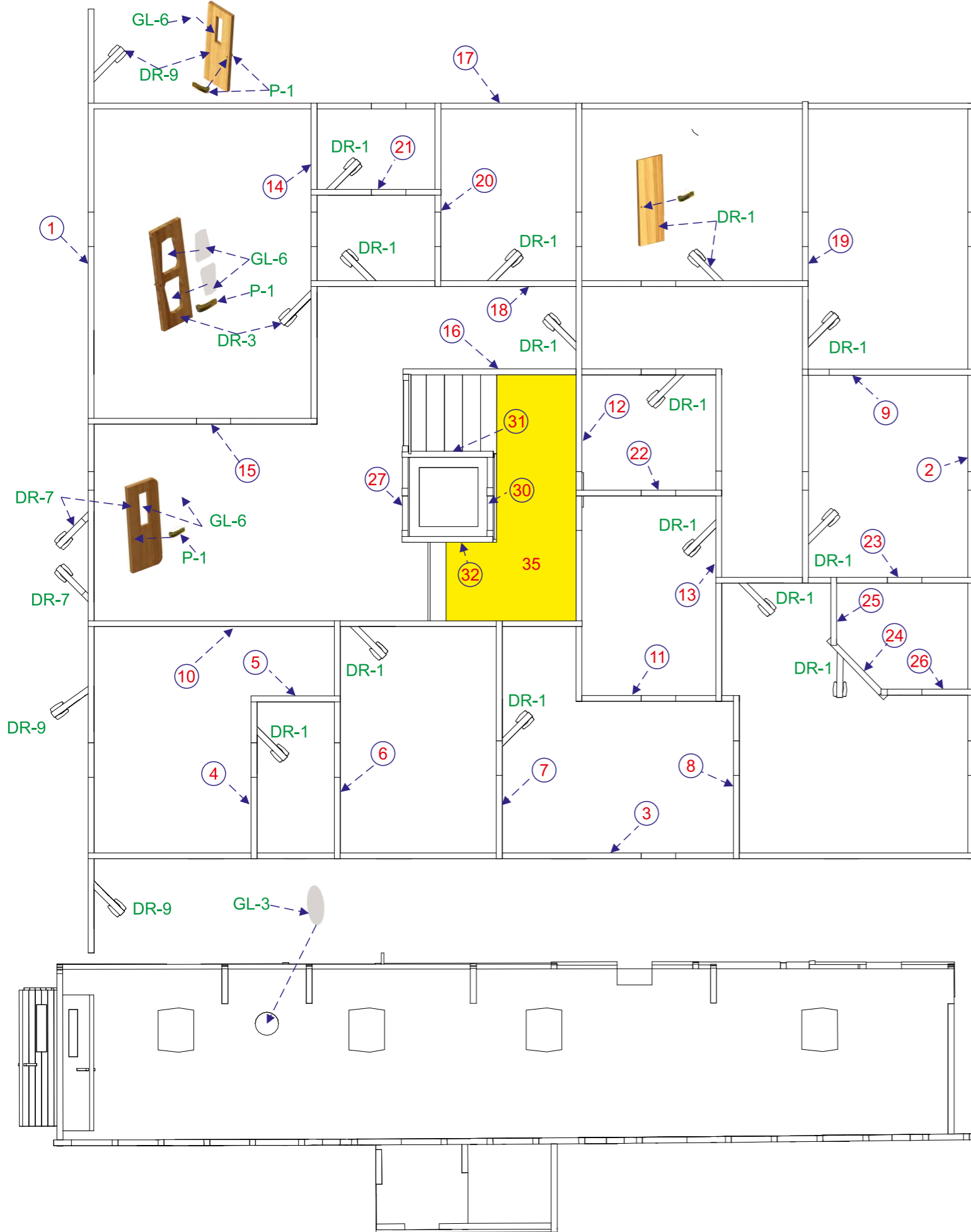




# BOTTOM DECK FRONT

This section's wall parts available on the sheet of BOTTOM DECK FRONT.

Led platforms are clarified with red. Drill holes to place how many led you want to. See the led scheme.  
Led cables are collected through the yellow clarified passage down hull to connect energy source.



Use special cement to attach the glasses.

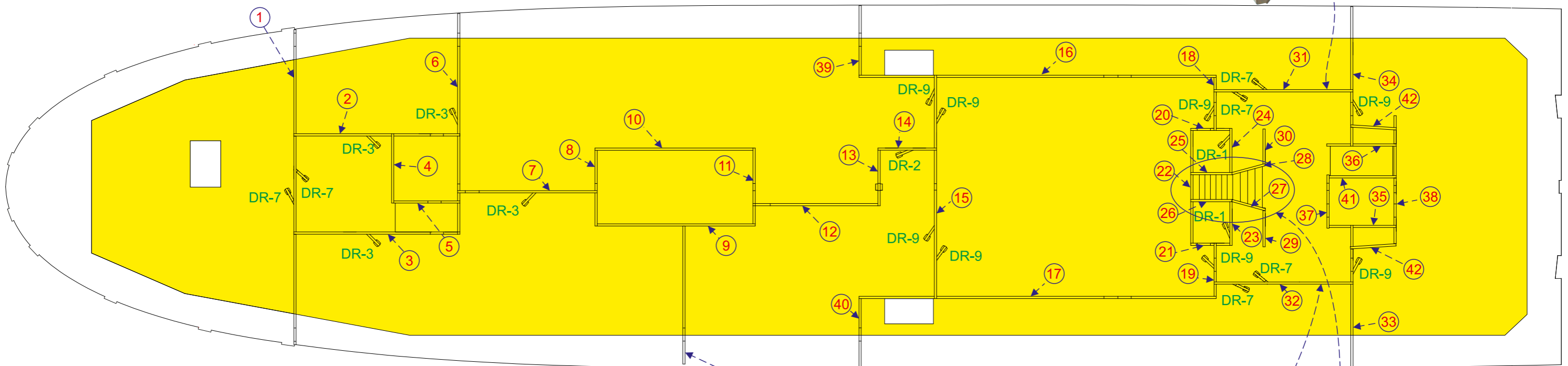
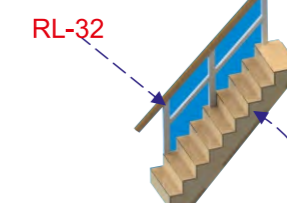




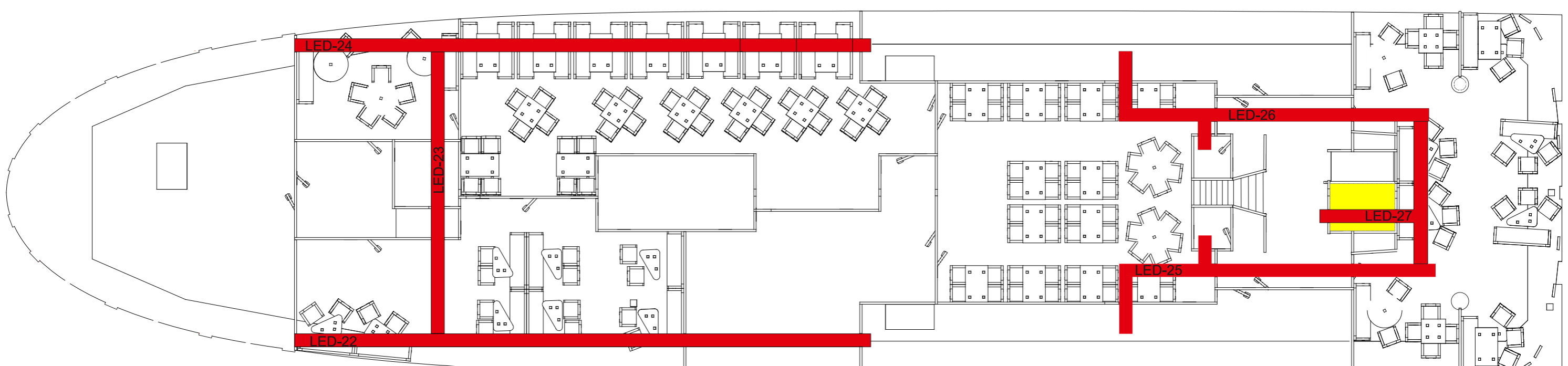
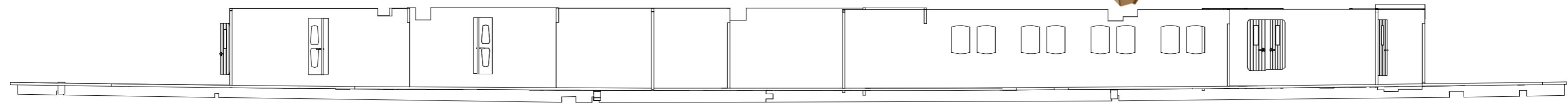
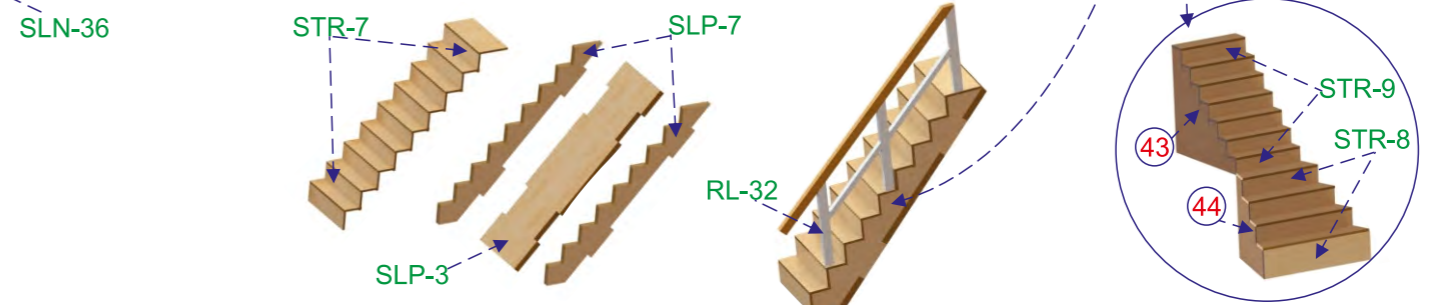


# UPPER DECK-1

This section's wall parts available on the sheet of UPPER DECK.



Yellow are will be seperated after the rooms are existed. Be careful of placing the seats.  
Do not glue the wall part on the white area. Yellow area is existed moveable.



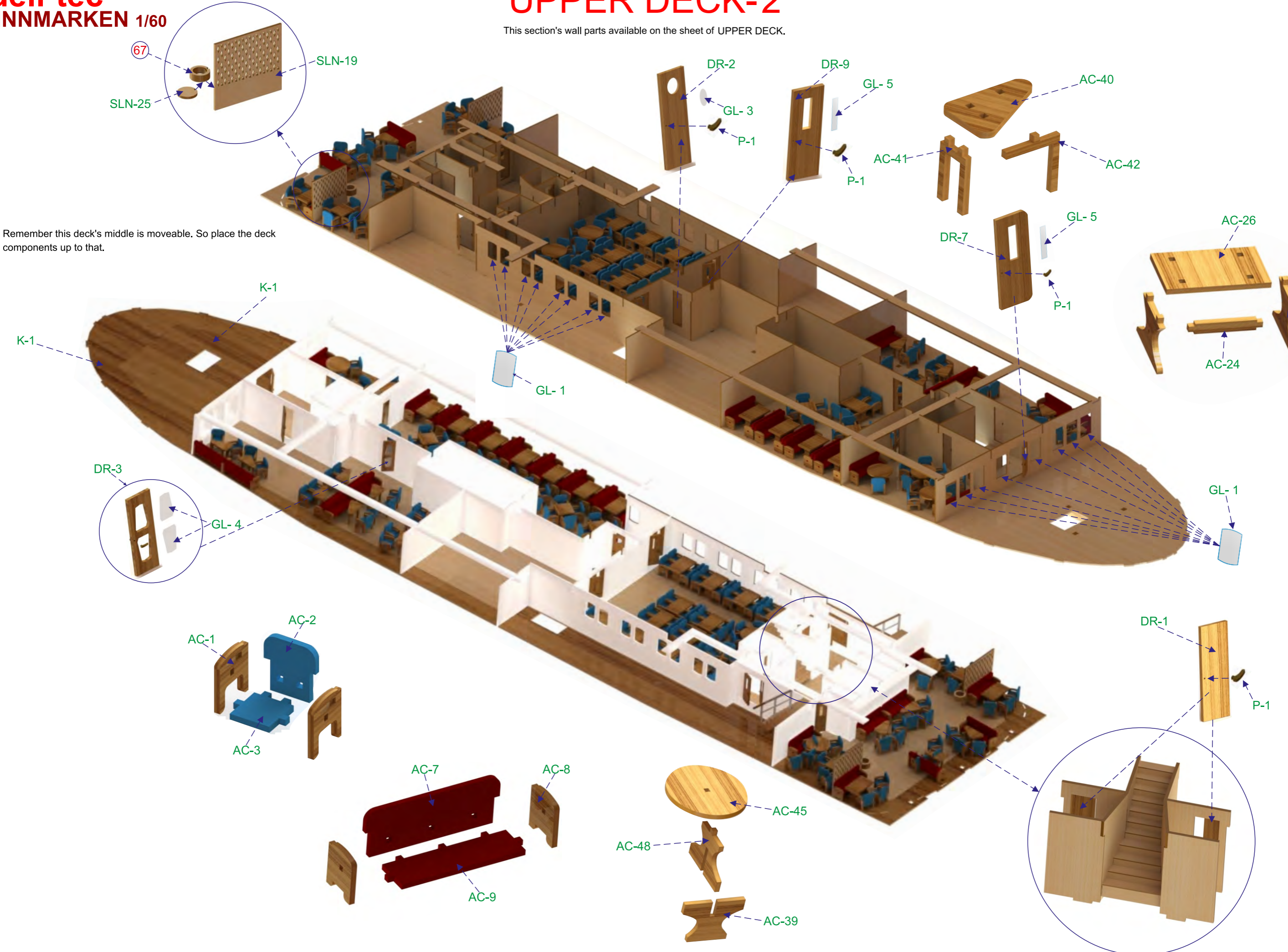
Led platforms are clarified with red. Drill holes to place how many led you want to. See the led scheme.

Led cables are collected through the yellow clarified passage down hull to connect energy source.



# UPPER DECK-2

This section's wall parts available on the sheet of UPPER DECK.



Remember this deck's middle is moveable. So place the deck components up to that.

67

SLN-19

SLN-25

K-1

K-1

GL-1

DR-3

GL-4

AC-2

AC-1

AC-3

AC-7

AC-8

AC-9

AC-45

AC-48

AC-39

DR-2

DR-9

GL-5

GL-3

P-1

P-1

AC-41

AC-40

AC-42

GL-5

DR-7

P-1

AC-26

AC-25

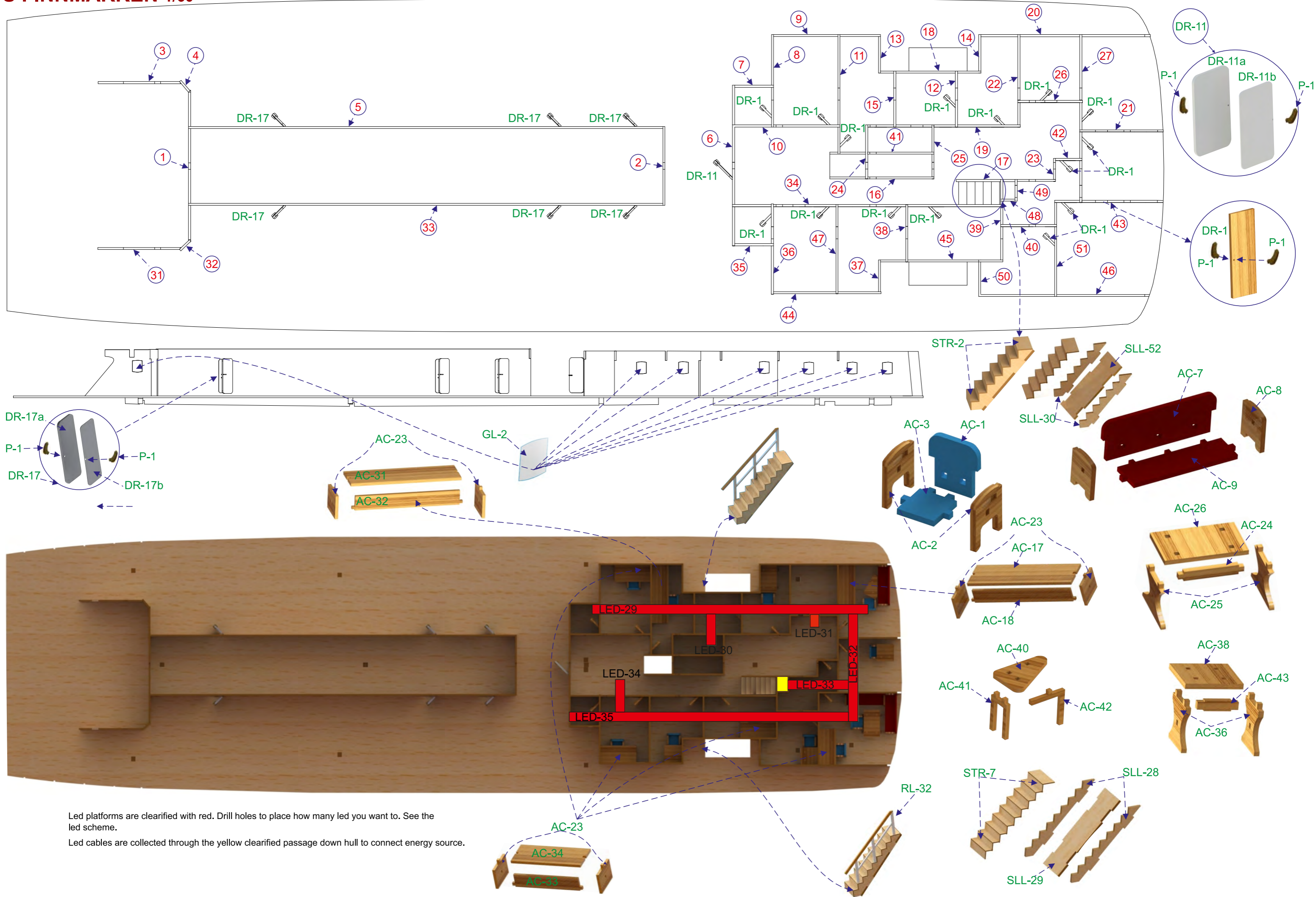
AC-24

GL-1

DR-1

P-1





Led platforms are clarified with red. Drill holes to place how many led you want to. See the led scheme.  
 Led cables are collected through the yellow clarified passage down hull to connect energy source.



# LED SET-UP

You will find out how to set lights up in this page. The first rule is each 3 leds connected serial. So, the light sets exist bunch of 3 serials in every deck. Cooper cable is isolated, so when you set it, sand or fire the tips to unisolate. The tip of the resistance is unimportant. Any tip can be connected to the serial leds.

Wherever you would like to put a led, penetrate 3 mm the led platform and place the led into. Then glue the led there but do not use over the glue, just tiny.

Test the leds on every stage If they work properly. If the leds are blinking, the energy source's amper is not enough. If there is no light at all, then check cables these might not be unisolated well or disconnected.

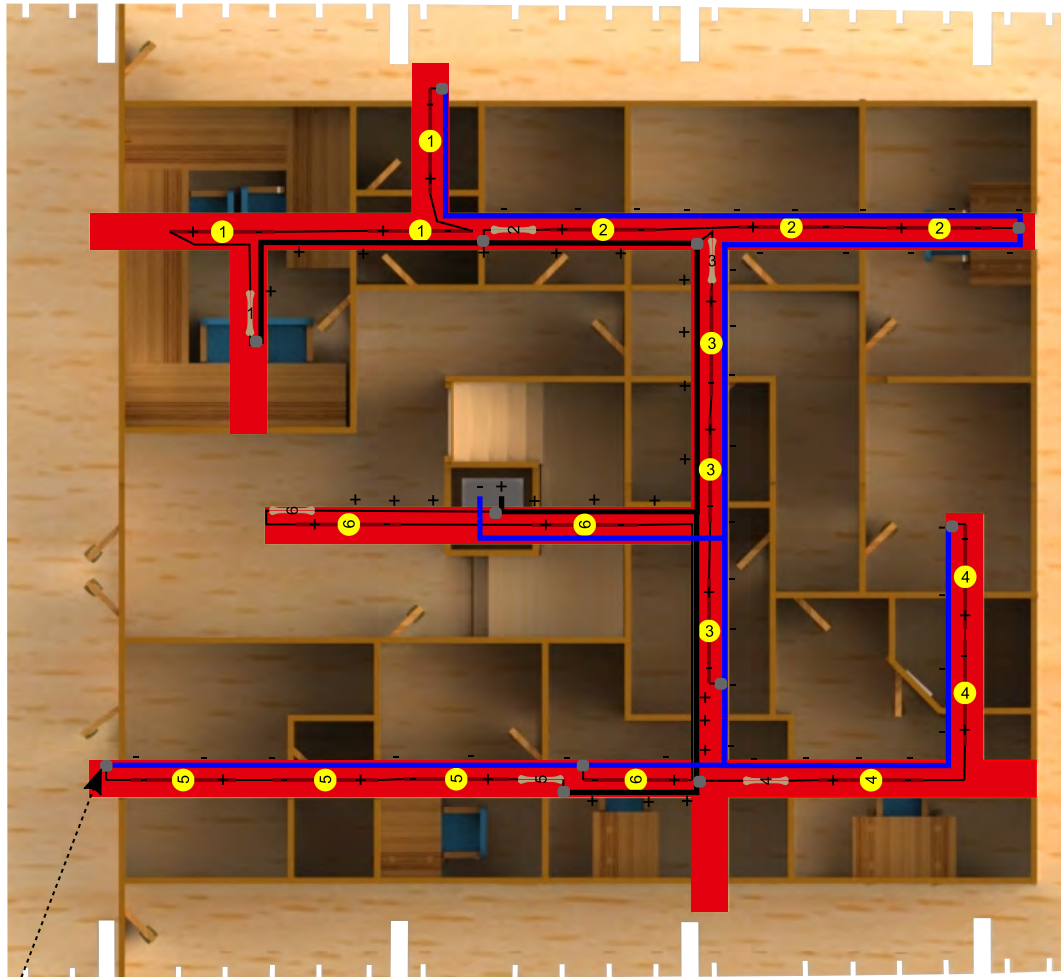
Connect the cables and the other components soldering. If you are not expert on soldering, get and support from an expert.

Though the cooper wire is unisolated, it might lose its feature by the time. If they are cross anywhere, put a small separator to keep it away from short circuit.

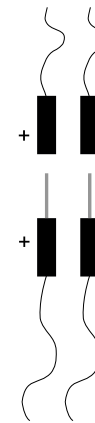
By the time, some leds might be died. In this situation, test the serial that covers that led and resistance. If you do not have a equipment to test, then just swap those 3 serial leds and resistance with new ones.

Collect the deck cables into a tip of a jack. The other tip of jack should be connected to the energy source. You do this for every deck it might be needed to remove. It is going to make easier to disattach the decks. Easily you will plug off the led connections to make free the decks.

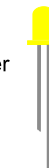
Watch out collecting (+) and (-) will be right.



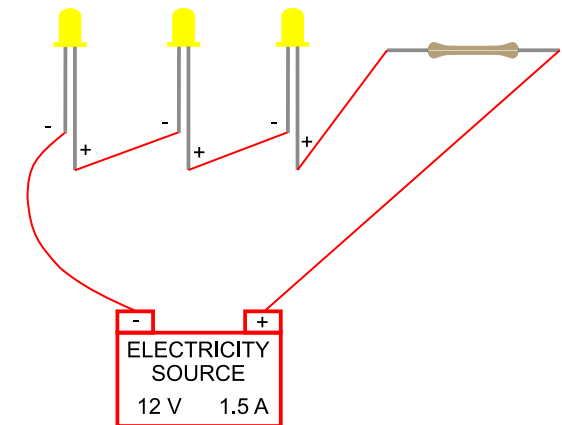
Solder



LED  
3 Volt  
0,02 Amper



RESISTANCE

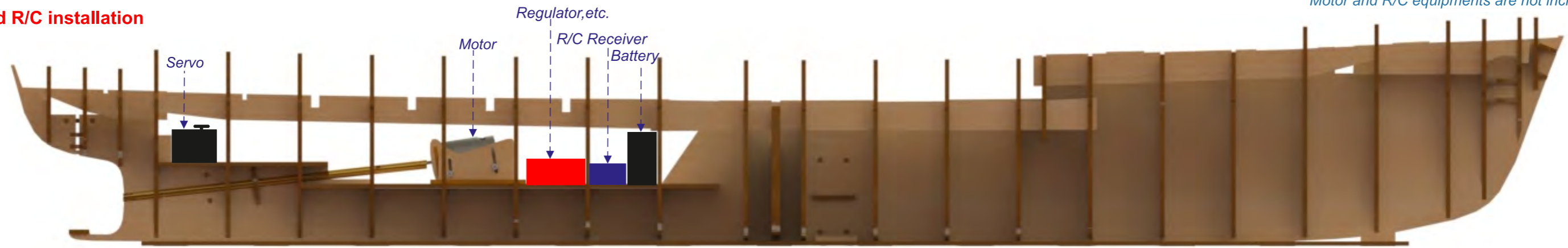




**modell-tec**  
**M/S FINNMARKEN 1/60**  
**Motor and R/C installation**

**Plan-R/C**

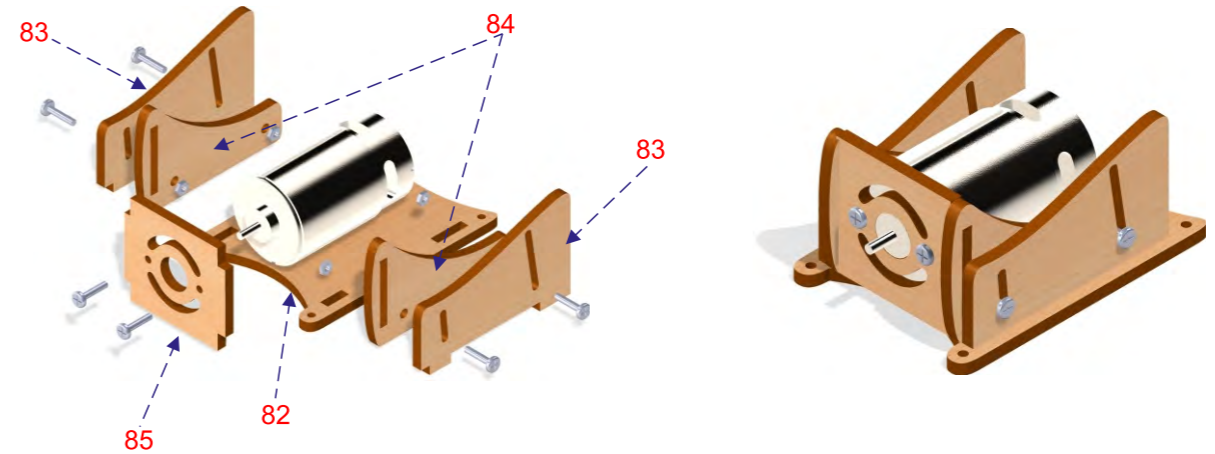
\* Motor and R/C equipments are not included in the kit.



*This is supplementary equipment which is not included into the building kit. We can deliver what's necessary, if wanted. We recommend a 600 electric engine installed into the engine framing. Rudder stock should be connected to the servo on the servo plate. RC-receiver, speed regulator and accumulator should be mounted in front of the engine room, depending on available space. It's an advantage to place the RC-receiver/antenna as high as possible in the model. Ensure that while placing accumulator, equipment and ballast the boat is in correct balance with the waterline. If you are going to use the model in the water, we recommend treating its hull with the Epoxy glue outwardly before varnishing and painting it. Make stern tube waterproof by placing some grease into it and on to propeller shaft. Paints and colors: Look at the drawing and picture on the box lid and on the side of the box.*

Good luck building Finnmarken!

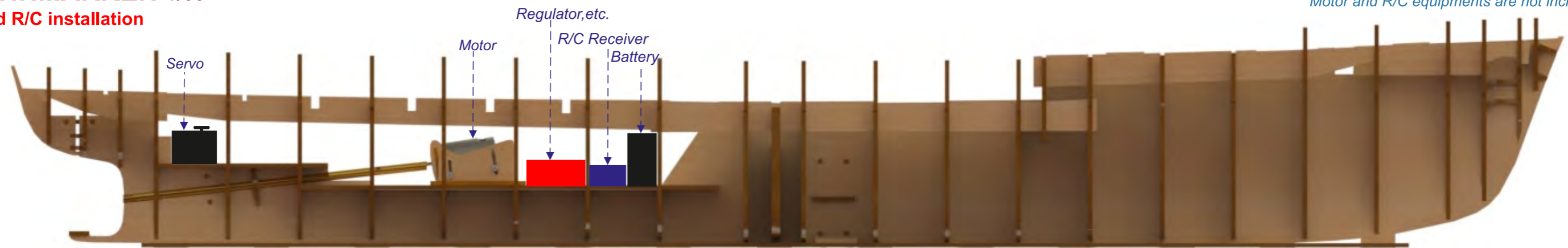
**modell-tec**  
 ØGREY-HOBBY



**modell-tec**  
**M/S FINNMARKEN 1/60**  
**Motor and R/C installation**

**Plan-R/C**

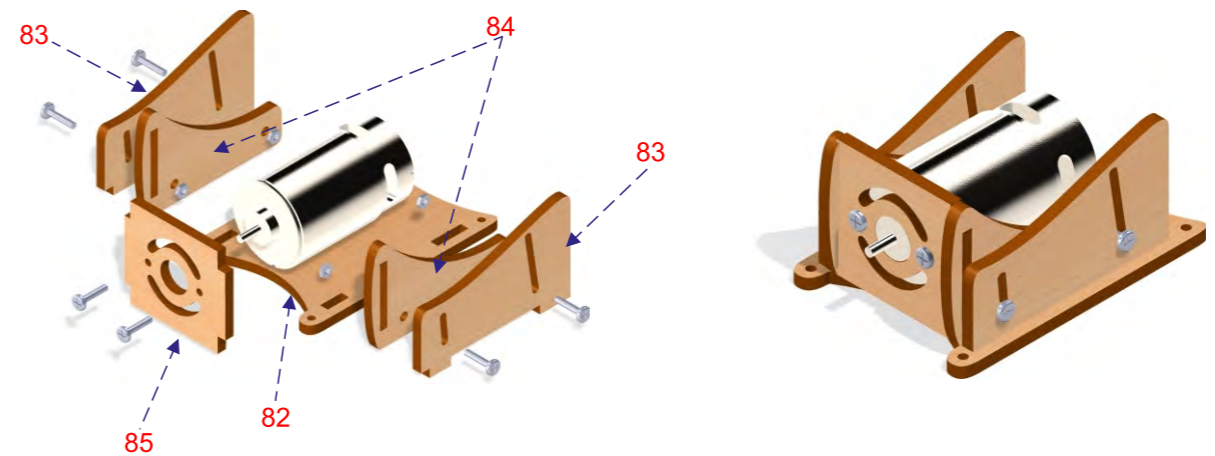
\* Motor and R/C equipments are not included in the kit.



*This is supplementary equipment which is not included into the building kit. We can deliver what's necessary, if wanted. We recommend a 600 electric engine installed into the engine framing. Rudder stock should be connected to the servo on the servo plate. RC-receiver, speed regulator and accumulator should be mounted in front of the engine room, depending on available space. It's an advantage to place the RC-receiver/antenna as high as possible in the model. Ensure that while placing accumulator, equipment and ballast the boat is in correct balance with the waterline. If you are going to use the model in the water, we recommend treating its hull with the Epoxy glue outwardly before varnishing and painting it. Make stern tube waterproof by placing some grease into it and on to propeller shaft. Paints and colors: Look at the drawing and picture on the box lid and on the side of the box.*

Good luck building Finnmarken!

**modell-tec**  
 ØGREY-HOBBY





## FINNMARKEN PART LIST

NO	QUANTITY	DESCRIPTION	SIZE	TYPE
0-00	2	Keels	4 mm	Plywood
1...24	24	Frames	4 mm	Plywood
MID-1..3	3	Frames	4 mm	Plywood
25-26	4	Wedges	4 mm	Plywood
27A-B-C	11	Keel Lock	4 mm	Plywood
28	2	Rudder Shaft House	4 mm	Plywood
29	1	Rudder Shaft House	4 mm	Plywood
30	4	Anchor House Supports	4 mm	Plywood
31-32	2	Nose Supports	4 mm	Plywood
33	2	Wedges	4 mm	Plywood
34...38	10	Frame Locks	4 mm	Plywood
39-40	2	R/C Equipment Platforms	4 mm	Plywood
41-42	3	Deck Supports	4 mm	Plywood
43...45	54	Panel Supports	4 mm	Plywood
46...50	8	Deck Supports	4 mm	Plywood
DECK 1A-1B	2	Bottom Decks	1.5 mm	Plywood
DECK 5	1	Front Deck	1.5 mm	Plywood
K1	150	Deck Covering Strips	0.5x3x450 mm	Cover Strips
RL16-17	4	Bottom Deck Rails	1 mm	PVC
ME5	1	Propeller Shaft Pipe	7 mm	Metal
ME6	1	Rudder Shaft Pipe	3 mm	Metal
SLG 77-78	2	Grill Parts	1.5 mm	Plywood
FLX-2	1	Back Panel	1 mm	Flexible Plywood
I...XV	118	Panel Supports	1.5 mm	Plywood
PN-L1...L3	3	Side Panels	1.5 mm	Plywood
PN-R1...R3	3	Side Panels	1.5 mm	Plywood
GL-1	60	Large Glass	1 mm	Plexy-Glass
GL-2	73	Small Glass	1 mm	Plexy-Glass
GL-3	112	Porthole Glass	1 mm	Plexy-Glass
GL-5	25	Rectangular Glass	1 mm	Plexy-Glass
GL-10	12	Slot Glass	1 mm	Plexy-Glass
GL-11	2	Elips Glass	1 mm	Plexy-Glass
GL-12	2	Small Elips Glass	1 mm	Plexy-Glass
SLC-75	1	Bottom Deck Back Room Part	1.5 mm	Plywood
SLC-76	1	Bottom Deck Back Room Part	1.5 mm	Plywood
SLC...G	91	Bottom Deck Back Room Parts	1.5 mm	Plywood
DR 1...17B	135	Doors	1.5 mm	Plywood
S1	120	Hull Covering Strips	1.7x6x720 mm	Strips
S2	12	Covering Strips	1x4x500 mm	Strips
51...58	8	Deck Supports	4 mm	Plywood
SLN 23-24-27	6	Anchor House	1.5 mm	Plywood
3D-31	1	Huge Bollard	-	3D Print-out
DECK 2A-2B	2	Upper Deck	1.5 mm	Plywood
59...65	7	Deck Supports	4 mm	Plywood
PN R4-L4	2	Upper Deck Panel	1.5 mm	Plywood
PN-5	1	Front Panel	1.5 mm	Plywood
66	1	Front Panel Support	4 mm	Plywood
SLN 20-26	6	Deck Balcony	1.5 mm	Plywood
SLN-27	2	3. Deck Back Parts	1.5 mm	Plywood
SLP-9	1	3. Deck Back Parts	1.5 mm	Plywood
SLO-32	6	Panel Supports Part	1.5 mm	Plywood



3B-22	18	Front Deck Air Conditioner	-	3D Print-out
3B-35	2	Large Double Bollard	-	3D Print-out
3B-36	4	Small Double Bollard	-	3D Print-out
3B 39..41	3	Main Winch Parts	-	3D Print-out
3B 26-30B	10	Main Winch Parts	-	3D Print-out
3D-31	1	Huge Bollard	-	3D Print-out
ME-13	1	Main Winch Shafts	2x51	Metal Wire
ME-11	1	Main Winch Shafts	2x38	Metal Wire
STR 1...9	-	Stair Steps	0.5 mm	Wood Sheet
SLP 6-8	3	Back Stair	1.5 mm	Plywood
ME-1	-	Flat Wire	0.8x1200 mm	Flat Wire
ME-4	1	Rudder Shaft	1.7x60 mm	Flat Wire
ME-16	1	Rudder Shaft Bottom Part	1.7x10 mm	Flat Wire
3B-17...20	7	Propeller Parts	-	3D Print-out
91-98-99	4	Rudder Parts	4 mm	Plywood
SLN-33	1	Rudder Parts	1.5 mm	Plywood
3B 13-14	4	Side Crane Parts	-	3D Print-out
3B 15	10	Single Pulley	-	3D Print-out
ME-15	2	Side Crane Posts	3x70 mm	Metal Pipe
3B 21A-B	2	Side Crane Motor	-	3D Print-out
3B-16	4	Double Pulley	-	3D Print-out
3B-24	1	Front Chain Bed Middle Part	-	3D Print-out
3B-23	2	Front Chain Beds	-	3D Print-out
3B-25	4	Anchor Parts	-	3D Print-out
SLN-31	1	Nose Part	1.5 mm	Plywood
3B-2	4	Pulley Bollards	-	3D Print-out
P2	6	Nose Part Supports	1 mm	Plexy-Glass
SLN 21-22	6	Crane Connect Parts	1.5 mm	Plywood
R1...3	24	Small Winch Parts	-	3D Print-out
R-11	10	Eyebolts	-	Ready
Y-1		Yarn	5 mt.	Ready
R-8	2	Balance Wings	1.5 mm	Plywood
R-10	-	Chain	400 mm	Ready
RL 1-35	-	Rails	-	PVC
DC-2	-	Flag	-	Sticker
GL 8-9-15	4	Main Crane Cabine Glass	1 mm	Plexy-Glass
3B 1A-B	2	Piston Connect Parts	-	3D Print-out
ME-7	1	Piston Pipe	3x41	Metal Pipe
GL 13-14	4	Piston Connect Part Glasses	1 mm	Plexy-Glass
ME-14	1	Piston Wire	1.7x44 mm	Metal Wire
P-1		Door Handle	1 mm	PVC
R-9	8	Lifeboat Hangs	2 mm	Plexy-Glass
3B 33-32	16	Lifeboat Hangs Parts	-	3D Print-out
FC-1	4	Tarpaulin	-	Fabric
SLO-22	8	Lifeboat Parts	1.5 mm	Plywood
SLT1...13	52	Lifeboat Parts	1.5 mm	Plywood
SLU 1...3-5	4	Operator Chair Parts	1.5 mm	Plywood
3B-12	1	Main Crane Ring		3D Print-out
ME-8	1	Main Crane Pipe	20x26	Metal Pipe
ME 9	1	Main Crane Pipe	25x38	Metal Pipe
3B-37	1	Main Crane Part	-	3D Print-out
SLN 1...15	20	Main Crane Wall Parts	1.5 mm	Plywood
SLN 17-18-28	4	Main Crane Wall Parts	1.5 mm	Plywood
LED 1...36	36	Led Panels	1.5 mm	Plywood
SLM 1...34		Front Deck Room Parts	1.5 mm	Plywood
GL-16	2	Front Deck Step Parts	1 mm	Plexy-Glass



68-69	4	Front Deck Supports	4 mm	Plywood
71...79	15	4.Deck Supports	4 mm	Plywood
DECK 4A-B	2	4.Decks	1.5 mm	Plywood
80-81	2	Wheelhouse Roof Supports	4 mm	Plywood
3B-3	2	Compass	-	3D Print-out
3B-4	2	Telegraph	-	3D Print-out
3B-5	1	Rudder Box	-	3D Print-out
SLO 1...21	-	4.Deck Room Parts	1.5 mm	Plywood
SLO 23...25	-	4.Deck Room Parts	1.5 mm	Plywood
SLO 27...31	-	4.Deck Room Parts	1.5 mm	Plywood
SLP 4-5	-	4.Deck Front Panel Support	1.5 mm	Plywood
GL-4	9	Indoor Door Glass	1 mm	Plexy-Glass
Red-Led	1	Left Board Light	-	Ready
Green-Led	1	Sağ Board Light	-	Ready
Clear-Led	125	Room Lights	-	Ready
SLO-26	2	4.Deck Board Light Panels	1.5 mm	Plywood
FLX-3	2	Balcony	1 mm	Wood Sheet
3B-38	1	Conic Post	2x3x10	3D Print-out
SLN 34-35	4	Post Led Supports	1.5 mm	Plywood
ME-10	1	Radar Wire	2x30 mm	Metal Wire
3B-6	1	Projector	-	3D Print-out
3B 7A-B	2	Small Radar Parts		3D Print-out
R-7	1	Projector Glass	1 mm	Plexy-Glass
GL-17	2	Wheelhouse Door Glasses	1 mm	Plexy-Glass
3B 11A-B	2	Large Radar Parts		3D Print-out
SLN-16	1	Large Radar Panel	1.5 mm	Plywood
70	1	Large Radar Support		
ME-2	1	Main Post Wire	2x80	Metal Wire
SLN-32	22	Main Post Stairs	1.5 mm	Plywood
ME-2	1	Main Post Wire	1.5x30	Metal Wire
GL-7	6	Air Conditioner Glass	1 mm	Plexy-Glass
R 4-5	32	Lifeboat Capsul	1 mm	Plexy-Glass
3B-36	16	Lifeboat Capsul Lid		3D Print-out
3B-9	1	Conic Air Conditioner		3D Print-out
3B-8	1	Air Conditioner		3D Print-out
SLT 22...27	11	Funnel Parts	1.5 mm	Plywood
SLT 16....21	6	Main Post Parts	1.5 mm	Plywood
86	1	Main Post	4 mm	Plywood
SLU-4	1	Main Post Parts	1.5 mm	Plywood
88...90	5	Funnel Parts	4 mm	Plywood
SLP-1	1	4.Deck Part	1.5 mm	Plywood
3B 10A-B	2	Tank Parts		3D Print-out
82...85	6	Motor Bed Parts	4 mm	Plywood
GL-18	6	Bottom Deck Back Door Glass	1 mm	Plexy-Glass
SLL-SLV	57	3.Deck Room Parts	1.5 mm	Plywood
AC-A...E	-	Chair-Desk-Armchair Parts	1.5 mm	Plywood
SLL 30-52	3	3.Deck Stair Parts	1.5 mm	Plywood
SLL 28-29	6	3.Deck Side Stair Parts	1.5 mm	Plywood
SLN-36	1	Upper Deck Room Part	1.5 mm	Plywood
SLH...K	47	Upper Deck Room Parts	1.5 mm	Plywood
SLA-B	39	Bottom Deck Front Room Parts	1.5 mm	Plywood
Copper Wire	-	Electrical Wiring	20 mt.	Copper Wire
Screws	-	Screws		Screws
DC-1	1	Mermaid Table		Sticker
DC-3	1	VDS		Sticker
DC-4	4	Finmarken Name Sticker		Sticker



DC-5	2	Symbol Stickers		Sticker
DC-6	2	Number Stickers		Sticker
DC-7	1	Blohm & Voss Sticker		Sticker
SLN 19-25	4	Ashtray	1.5 mm	Plywood
67	2	Ashtray	4 mm	Plywood
DC-8	1	Norway Flag		
DC-9	1	Ragnvald Jarl Name Sticker		
		NRK/Sommerbaten Name Sticker		